

HUNTING | FISHING | LODGING AND CAMPING | DINING | HISTORIC MILLS



The Real ^{2023 EDITION} Ozarks **FREE**

LAKE FUN | HIKING | HORSEBACK RIDING | CANOEING | RIVER FUN

WE CARE

**We are more than
primary care**

Left:

**Trisha Vigna, APRN
Board Certified Nurse
Practitioner**

Right:

**Edward Henegar, DO
Board Certified Family
Medicine & Geriatrics**

Our Services Include:

- Lab Digital Xrays
- 340B Prescriptions
- Behavioral Health Center: Individual and Family Counseling
- Pulmonology
- Therapies: Physical, Occupational, and Speech Therapies
- Wound Care
- **NEW** Pharmacy in downtown Gainesville
- And more!

Call 417-679-4613 to make an appointment.



**Gainesville
39 Medical Drive
Gainesville, MO 65655**



WEST PLAINS
GAINESVILLE
Missouri Ozarks Realty, Inc.

417-256-1000
www.WestPlainsUC.com

The Real Estate Leaders in Happily Ever Afters!!



Amanda Tusher



Bob McBride



*Debra
Shilling-Smith*



*Andrea
Crews-Martin*



Rachael Schneider



Kristie Harrill



Heather Foster



Mary Mike Taylor



Vanessa Becker



Brandy Thayer



Amanda Watkins



Jeanne Winter



Toyah Murray





1952

2023

Theodosia Marina-Resort, Inc.

ON BULL SHOALS LAKE

Lake Road 160-25, P.O. Box 390

Theodosia, MO 65761

417-273-4444 **MARINA-RESORT**



EMAIL THEODOSIAMARINA@GMAIL.COM FOR OUR FULL COLOR BROCHURE
AND RATE SHEET. DON'T FORGET TO CHECK US OUT ON FACEBOOK

Marine Sales & Service

417-273-2026



*... with a view of
Bull Shoals lake*

Enjoy a delicious meal ...



We Do Catering & Special Occasions
Full Service Restaurant
Daily and Nightly Specials

TWO STORY MOTEL AT WATER'S EDGE

Housekeeping Cottages
Three Lodges - Each
Sleeps 16 People -
Non Smoking

Near Large Pool & Lighted Tennis Courts



FORT COOK RV PARK

With Full Hook-ups,
Hot Shower & Laundromat
Multi-Use Recreation Building
Meeting Room Available



CASH SAVER *Pantry*



On Bull Shoals Lake • Lake Road 160-25
Theodosia, MO • 273-4444

OTTER CREEK LODGE



2000 sq. ft. Log Lodge, 2 Baths w/ jacuzzis, 4 Bedrooms-
8 Queen Size Beds, Complete Kitchen w/ Dishwasher & Ice
maker, Fireplace, Large Porch with GREAT Lake View.

417-273-4444

7-Days-A-Week

FULL SERVICE • DELI/BAKERY

We Accept: EBT • WIC • Mastercard • Visa • Discover

(417) 273-4784 DOWNTOWN THEODOSIA

Visit us at tmrbullshoals.net

The Real Ozarks

Escape. Unwind. Rest in the beauty of the Ozarks.



Ozark hills draped in clouds
Taken west of Dora
photo by Kevin Wonders

what's inside

7

GETTING HERE

Driving directions to Ozark County

10

RIVER FUN & FISHING

North Fork of the White, page 10

North Fork accesses, page 11

Fishing the North Fork, page 13

Bryant Creek, page 14

Bryant Creek accesses, page 15

18

LAKE FUN & FISHING

Bull Shoals Lake, page 19

Norfork Lake, page 23

26

LODGING/CAMPING

Find the perfect home away from home in Ozark County

35

RECREATION AREAS

Caney Mountain, page 36

Glade Top Trail, page 40

Noblett Lake, page 45

North Fork Rec. Area, page 48

Hercules Glade, page 53

Pigeon Creek, page 57

Bryant Creek State Park, 58

60

HIKING

Lace your boots and hit the trail!

70

HISTORIC MILLS

Grist mills tell tales of the past

73

SCENIC DRIVES

Turkey, deer, other species

79

HUNTING

Turkey, deer, bear and more

84

FESTIVALS AND FUN

Fireworks displays

Bakersfest

Hootin an Hollarin

Christmas parades and events

89

PLACES TO EAT & DRINK

From fine dining to unique eats

99

ADVERTISER INDEX

Looking for a business in the area?

Welcome to the *real* Ozarks

Welcome to the real Ozarks, the one and only Ozark County, Missouri, a remote and rugged haven where nature outshines neon and "heavy traffic" is something you're more likely to encounter on the rivers than on the roads.

Stay for a while, and you too may find there's something magical about the mornings when the mist hugs the hollows as the sun creeps over the hills. And what can compare with a night sky so clear and dark the stars seem close enough to touch?

The rush of the rivers' see-through water, the rhythm of the lakes lapping against their shores, the sounds of the woods, the beauty of spring blossoms floating through the forest . . . Don't be surprised if these treasures call to you the next time you're back in the city.

An Ozark County vacation combines the ease of modern conveniences and the appeal of bygone days. Modern resorts with all the amenities, whether they're tucked "back in the sticks," stretch along the river or overlooking our two Corps of Engineers lakes, offer the same downhome charm and personal friendliness that "mom-and-pop" lodging has provided for decades. Come for a stay, and soon you'll probably feel more like family than guests.

Our hills offer thousands of acres of beautiful conservation areas and national forest webbed by hiking trails and scenic drives and dotted with campgrounds. The abundant wildlife, especially deer and turkey, make Ozark County a prime area for hunting.

And our waterways – lakes and rivers – are famous for trophy-winning fish. Canoeing, kayaking and tubing are popular pastimes on Bryant Creek and the North Fork of the White River, and Ozark County's friendly outfitters are ready to make the adventure easy for you.

If you prefer motorized water sports, the county's two full-service marinas offer rentals of everything you'll need to enjoy a day, or a week, cruising our lakes. Of course, they also offer stalls for you BYOB (bring your own boat) visitors too.

Come to Ozark County, and leave all the stress and hubbub behind. This is not a bright lights, big city kind of place. It's a retreat where visitors and residents slow down, settle in and soak up the peaceful pleasures of some of the oldest mountains on earth.

If you're like a lot of folks, the biggest problem you'll have is leaving. That's what happens when you discover the Real Ozarks.

ABOUT THIS YEAR'S COVER

David Crane of Washington, Missouri submitted this year's cover photo. The photo features two-and-a-half-year-old yellow lab Frankie enjoying Bull Shoals Lake from a paddle board. David said Frankie has been with the Crane family since she was weaned from her mother and is a very disciplined and friendly family dog who loves the water and water sports. She enjoys riding in/on a kayak, row boat, paddle board or motorized paddle board, David said. The Crane Family has been visiting family members who live on Bull Shoals Lake for the past 30 years and have a family cabin on the Spring Creek branch of Bull Shoals Lake, which means Frankie has a lot of opportunity to enjoy swimming and boating in Bull Shoals Lake.



Getting here

Ozark County, Missouri, is nestled amid the hills, rivers and lakes near the center of the Missouri-Arkansas border. This scenic, secluded heart of the Ozarks is far away from rush-hour traffic and big-city hubbub – but easy to get to if you know the way. Come visit!



Driving directions

Directions are to Gainesville, the county seat of Ozark County.

From Branson

Head east on Highway 76 for 14 miles to Highway 160. Then turn east (right) and continue for 45 miles to Gainesville.

From Kansas City

Take US 71 south to MO 7 south to Clinton. From Clinton, take MO 13 south to Springfield (see note about GPS below). Then take I-44 east to US 65 south. Take US 60 east to Mansfield and turn south onto MO 5 south to Gainesville.

From Springfield

Disregard what your GPS may suggest! Here's the route most locals take: Head east from Springfield on Highway 60 to Mansfield (45 miles). Turn south onto Highway 5 toward Ava then continue south for another 30 miles from Ava to Gainesville.

From St. Louis

Take I-44 west to Rolla. Then take US Highway 63 south to West Plains. From there, take US Highway 160 west to Gainesville.

The Real Ozarks magazine is published by:

OZARK COUNTY
Times

504 Third Street; PO Box 188; Gainesville, MO 65655
Phone: 417-679-4641; www.ozarkcountytimes.com

Norene Prososki.....owner
Jenny Yarger.....publisher/advertising manager
Jessi Dreckman.....editor
Regina Mazingo.....circulation manager/ designer
Bruce Roberts.....reporter
Sue Ann Jonesfeature writer



Young whitetail deer fawn
photo by June Rowlett

Attribution

Much of the fishing, hiking, river, lake and hunting information in this volume is adapted from information available on the Missouri Department of Conservation, Mark Twain National Forest and US Army Corps of Engineers websites.

Closest airports

Springfield-Branson National Airport- (SGF)

92 miles from Gainesville

2300 N. Airport Blvd., Springfield, MO 65802
417-868-0500
flyspringfield.com

Branson Airport - (BKG)

68 miles from Gainesville

130 Wright Brothers Rd., Hollister, MO 65672
417-334-8234
flybranson.com

Location

Distances are to Gainesville, the seat of Ozark County.

Mountain Home, AR	26 miles, 33 minutes
Ava, MO	30 miles, 34 minutes
West Plains, MO	39 miles, 50 minutes
Branson, MO	60 miles, 1.2 hours
Springfield, MO	84 miles, 1.5 hours
Rolla, MO	118 miles, 2.2 hours
Fayetteville, AR	143 miles, 3 hours
Jefferson City, MO	174 miles, 3 hours
Little Rock, AR	173 miles, 3.5 hours
Memphis, TN	206 miles, 3.75 hours
St. Louis, MO	225 miles, 4 hours
Kansas City, MO	250 miles, 4 hours

OZARKS REALTY 4U LLC

Bringing buyers and sellers together in the Ozarks.



David Haskins
Broker-Owner
Auctioneer

Our family has been in southern Missouri for more than 175 years. We were raised here, we love this land and we know it well. Our personal relationship with the area will help us to help you in your search for property. We share a kinship with this land. Our ancestors moved here as pioneers in the 1840s, settling about a quarter mile upstream from the mouth of the Barren Fork Creek, where it empties into the Little North Fork of the White River in Ozark County. This area, abundant with wild-life, native flowers, plants and a crystal clear Ozark stream has been designated by the Missouri Department of Conservation as Haskins Ford.



Call us today to begin the search for your place in the Ozarks!

417-679-4997 • 417-257-4446

email us at
info@ozarksrealty4u.com

19225 US Highway 160
Gainesville, MO 65655

**Farms, Ranches, Lake & River Homes
Hunting, Recreational & Investment Properties**

www.ozarksrealty4u.com

Trout fishing

Casual fine dining

First-class lodging

Hiking

Hunting



Relax. Unwind. Enjoy.

2,000 secluded acres nestled in the Ozark mountains



www.rockbridgemo.com

417-679-3619

4297 County Road 142, Rockbridge, MO 65741

SHELTER STRONG

The Strength of our Shield

Terrific customer service, a policy you can count on, and rates that won't break the bank. Shelter's strength comes from providing all three, and our customers have relied on us for more than 75 years.



AUTO • HOME • LIFE

Douglas Hawkins
Douglas Hawkins Agency LLC
444 3rd St. • Gainesville, MO 65655
417-679-3522



We're your Shield. We're your Shelter.
ShelterInsurance.com

BEAUTIFUL RIVERS

In Ozark County, the North Fork of the White River and Bryant Creek offer visitors year-round scenic options for floating, fishing, swimming and otherwise enjoying the crystal clear waters of the Ozarks.



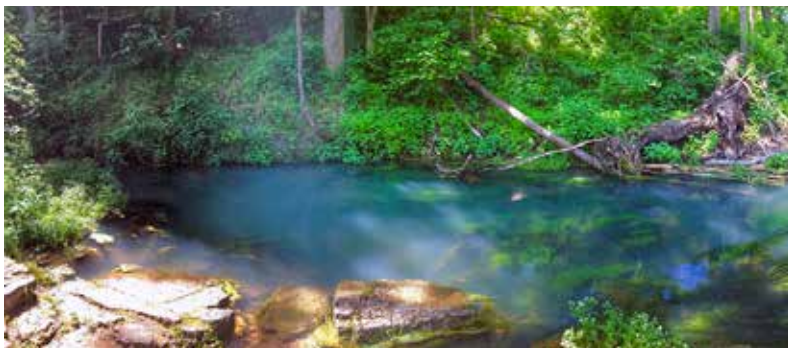
NORTH FORK of the White River

The cold, clear waters of the spring-fed North Fork of the White River provide the perfect place for a canoe, kayak or rafting trip during the peak of a hot Ozarks summer. Photo submitted by Rob Jeckstadt of Gainesville.

Fed by springs and protected by national forest for the top two-thirds of its 50-mile length, the North Fork of the White River in eastern Ozark County is a pristine jewel among Missouri's Ozarks float streams. A national forest recreation area, Missouri Department of Conservation access points, a legendary old grist mill and Blue Ribbon and Red Ribbon trout areas enhance the river's appeal to vacationers and locals alike.

Year-round beauty.

Since its upper reaches are in the Mark Twain National Forest, the North Fork retains its native natural character and has good watershed protection. The section from Highway 14 (Twin Bridges) south to H Highway (Patrick Bridge) is near-wilderness, and this stretch of river is fed by large springs that emerge amid stands of short-leaf pine and other lush forest. Seasonal water levels are consistent enough to keep some part of the North Fork always floatable, and although the gradient of the lower sections is not as spectacular as the river flows into Lake Norfork, the volume is good and the scenery is beautiful.



The picturesque Althea Spring is easily reachable from a short trail from the North Fork River just downstream from Patrick Bridge. The spring can also be accessed from a trail that begins at the parking lot at Patrick Bridge off H Highway.

{ GET ON THE NORTH FORK RIVER }

Public and private river accesses.

Hebron Bridge and access

Mo Dept.
Conservation
public river access
mile marker 18.7
Douglas County
Road 279 off
Highway 14

Twin Bridges Canoe and Campground

Private outfitter
and river access
mile marker 24.1
Highway 14, Dora

North Fork Recreation Area/ Hammond Bridge

Mark Twain Nat'l
Forest public
access
mile marker 29.2
CC Highway, Dora

River of Life Farm

Private outfitter
and river access
mile marker 35
River of Life Dr, Dora

Pettit's Canoe Rental

Private outfitter
and river access
mile marker 39
County Road 354,
Dora

Blair Bridge

Mo Dept.
Conservation
public river access
mile marker 39.2
County Road 354,
Dora

Sunburst Ranch

Private outfitter
and river access
mile marker 39.5
County Road 354,
Dora

Patrick bridge and access

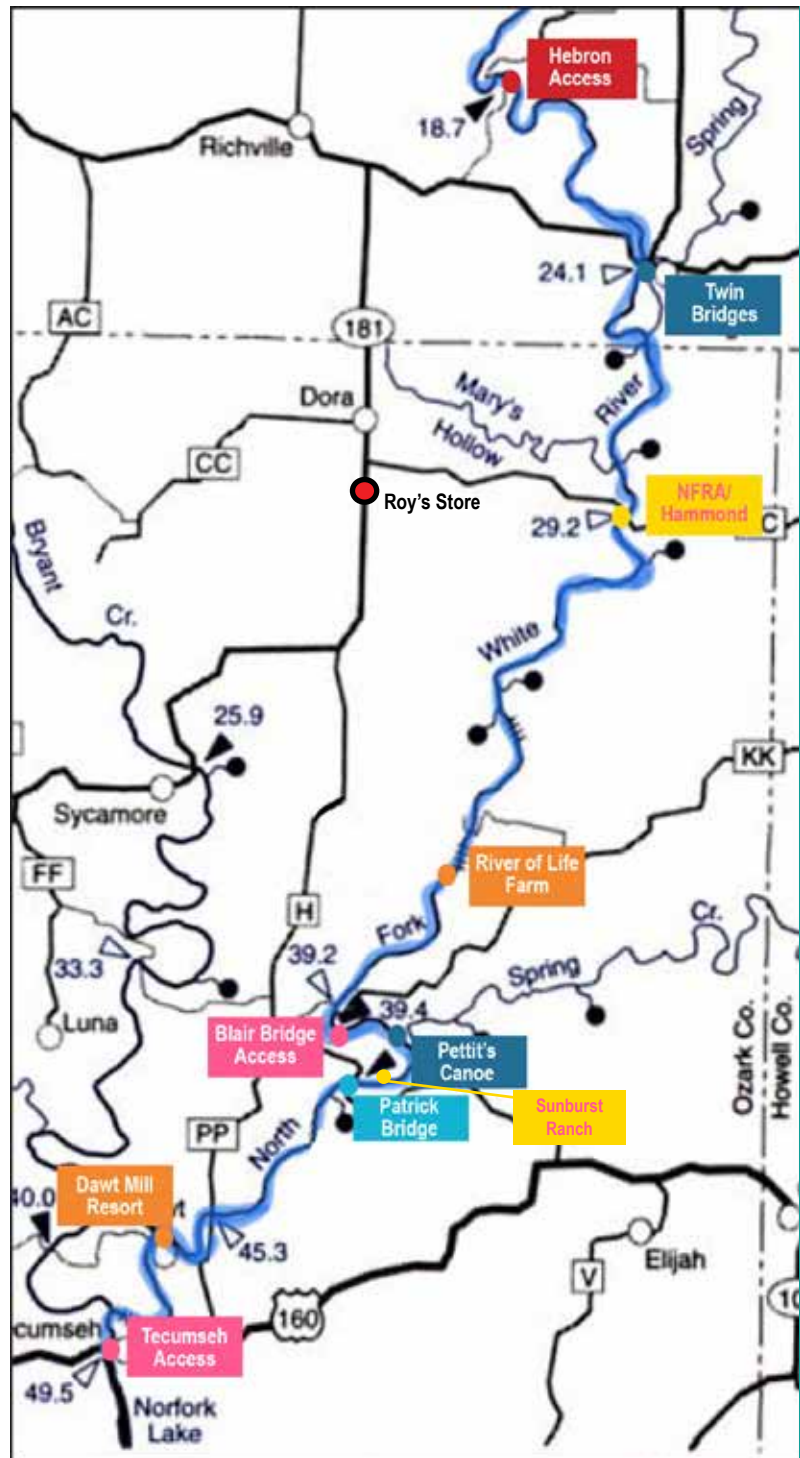
Mo Dept. of
Conservation
public river access
mile marker 42.2
H Highway, Dora

Dawt Mill Resort

Private outfitter
and river access
mile marker 47.1
Dawt Mill Drive,
Tecumseh

Tecumseh bridge and access

U.S. Army Corps
of Engineer public
river/lake access
mile marker 49.5
Highway 160,
Tecumseh



North Fork River accesses

**NEED TO
RENT A
BOAT?**

Twin Bridges Canoe and Campground

Canoes and kayaks;
cabins, camping and RV
sites, bar & grill and store.

417-256-7507

twinbridgesmo.com

Pettit's Canoe Rental

Canoes, rafts and kayaks;
cabins, camping, RV sites
and a country store.

417-284-3290

www.pettitscanoerental.com

Sunburst Ranch

Canoes, rafts and kayaks;
cabins, camping and RV
sites, fishing guides and a
camp store.

417-284-3443

sunburstranchcanoe.com

Canoe, kayak and raft outfitters

YOUR RIVER ADVENTURE STARTS HERE

FISH. FLOAT AND
CAMP ON THE
NORTH FORK
RIVER IN
SOUTHERN
MISSOURI

info@sunburstranchcanoe.com
facebook.com/SunburstRanchCanoe



Float Trips • Lodging • Trout Fishing • Camping • Hiking



CABINS



CAMPING



RV SITES

Now up to
15 RV sites!

Sunburst Ranch is located on a beautiful stretch of the North Fork River in Missouri. With over a mile of riverfront, you can bring your own inflatable devices and take a nice float without ever leaving the campground.

776 County Road 352 • Caulfield

Call 417-284-3443

for information, pricing and reservations



Hiking



Trout Fishing

PETTIT'S CANOE RENTAL, LLC

Serving floaters of the North
Fork River since 1972!

417-284-3290

Located on the scenic North Fork
of the White River by Blair Bridge
south of Dora, Missouri.

- Canoes • Rafts • Kayaks
- Cabins • Camping
- RV Sites • Country Store

www.pettitscanoerental.com

Craig and Shereen Pettit • 9000 County Road 354 • Caulfield, MO • email: pettitcanoerental@yahoo.com



Jeremy Gilmer holds up a nice brown trout he caught in the North Fork of the White River. Photo courtesy of Bryan and Stephanie Bade of Sunburst Ranch.

Trout, black bass and striped bass

Anglers can expect to catch quality trout in a variety of lengths.

The Blue Ribbon Trout Area (BRTA), which stretches from Rainbow Spring to Patrick Bridge Access, is still the best-bet for rainbow trout. Anglers will continue to notice that the body condition of these fish is very good.

Wooly buggers and prince nymphs bounced along the bottom are traditionally good wet fly patterns, while Adams and elk hair caddis dry flies work well when fish are surface feeding. Crayfish and minnow imitating crankbaits as well as various spinners are also effective.

The opportunity to catch brown trout in the Red Ribbon Trout Area (RRTA), from Patrick Bridge to Norfork Lake, is good and anglers should expect the majority of brown trout to range from 12 to 15 inches.

Quality brown trout also migrate into the BRTA and can be pursued with streamers.

To catch more brown trout, try fishing during the sunrise and sunset hours. Missouri Department of Conservation's stocking of brown trout will continue in the spring and fall to provide anglers with quality fishing opportunities.

Catch-and-release trout practices are encouraged to help sustain trout numbers while the population recovers from a 1,000-year flood experienced in 2017.

Anglers can also expect more abundant numbers of black bass, striped bass and other warm-water species migrating into the RRTA and BRTA due to spring high water events and sustained high water levels of Norfork Lake throughout the summer.



Sunburst Ranch owner Bryan Bade holds up a large striper he caught in the North Fork of the White River.

Fishing the NORTH FORK

Smallmouth and Goggle-eye.

Smallmouth bass can be caught in good numbers throughout the North Fork of the White River.

Most of the fish will be 12-15 inches. However, there are decent numbers of quality fish which exceed 15 inches.

Jigs, crankbaits and soft plastic baits are good choices for catching smallmouth bass (soft plastics cannot be used in the Blue Ribbon Trout Area).

Goggle-eye also occur throughout the river, but anglers can expect lower catch rates after recent floods.

These fish can be caught on the same type of lures as smallmouth, but generally smaller versions are more productive.

Be sure to concentrate fishing efforts in and around aquatic vegetation, boulders, and rootwads.

BRYANT

Creek

Bryant Creek, often called simply “the Bryant” by locals, is a relatively wild stream. It has slightly less paddling mileage than the North Fork of the White River and is highly fishable. There are no public canoe outfitters that service the Bryant, meaning only those who plan to bring and shuttle their own boats can float it. Because of the lack of outfitters, the Bryant doesn’t boast the big crowds the North Fork sometimes does. Less spring-fed, the Bryant has less volume and can be more difficult to float at times because it is narrower and has more obstacles - but it also has some fairly fast rifts. Before floating sections above Hodgson Mill in the summer, find out if those sections have enough water to float without having to wade and portage the shallow riffles.

{ FISHING THE BRYANT }

Bass anglers fishing below Highway 181 at Hodgson Mill will encounter more largemouth and spotted bass than those fishing upstream of the bridge. Ozark bass (goggle-eye) can be found in good numbers around rootwads and aquatic vegetation. Anglers can expect most of their catch to be over 6 inches with an occasional fish greater than 9 inches. Bass anglers can expect good catch rates of black bass (largemouth, smallmouth and spotted bass), although the vast majority of fish will be less than 12 inches. Walleye can be found in the lower river inhabiting the deeper pools and positioned around boulders and rootwads. Channel catfish can be found throughout most of Bryant Creek, although they are most prevalent in the section downstream of Highway 181 at Hodgson Mill. Anglers should expect good fishing for this species and should catch fish of all sizes.



Historic Hodgson Mill is located just off the banks of Bryant Creek across the river from the Sycamore access. This stunning photo, submitted by Jared Hughes, shows the mill and waterfall out front. The mill is privately owned, but it is frequented by the public, and picnic tables located across Highway 160 offer a nice place to have lunch.

{GET ON BRYANT CREEK}

Public river accesses along Bryant Creek. There are no outfitters on this river.

Bryant Creek public river accesses

Vera Cruz access
MDC access
river mile marker 0
Highway AB, Ava

Highway 14 bridge
Highway bridge/
public access
river mile marker 2.5
Highway 14, Douglas Cty.

Rippee Cons. Area
MDC access
river mile marker 4
County Road 328, Ava

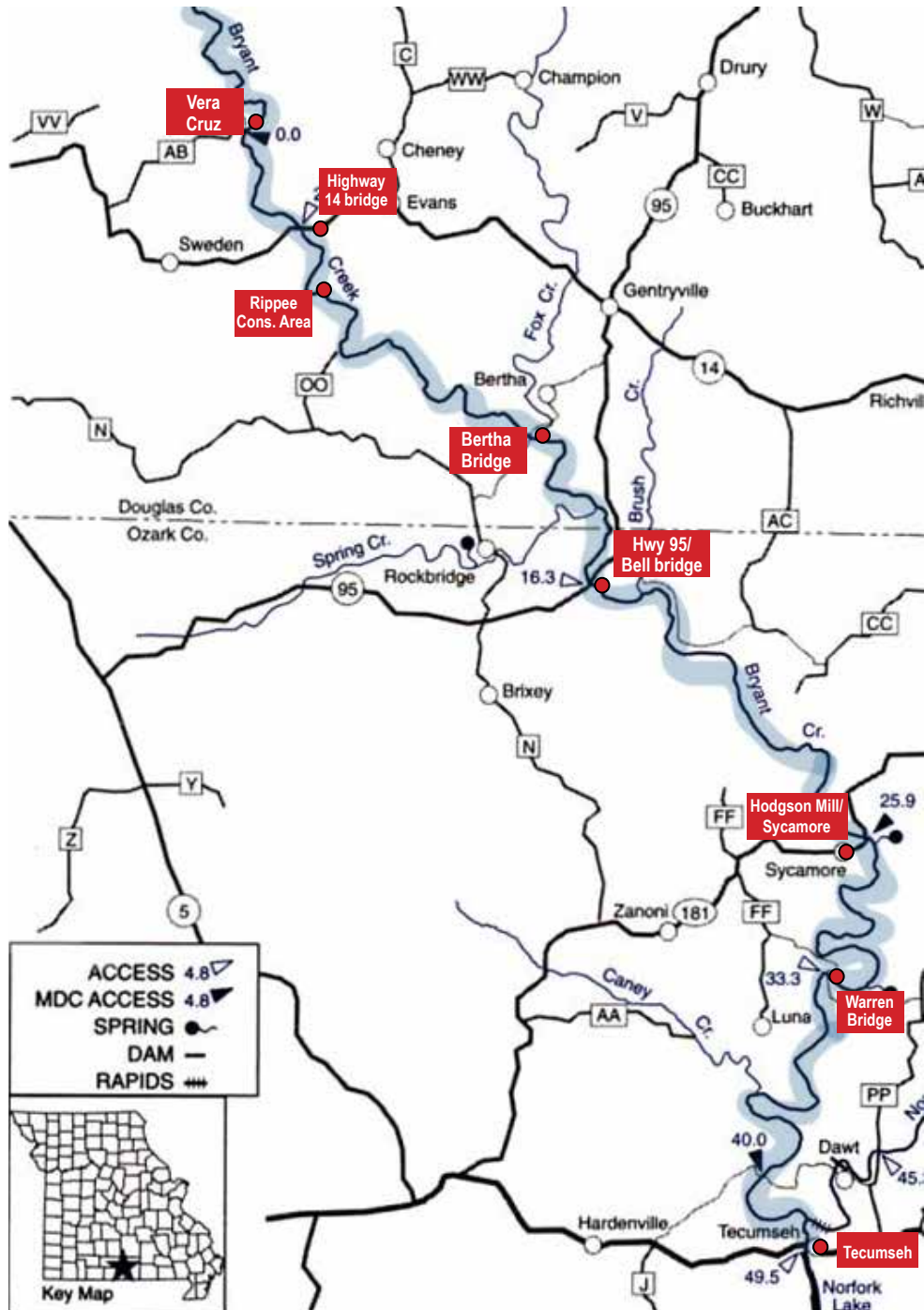
Bertha Ford Bridge
County Road bridge public
access
river mile marker 11.6
County Road 345, Ava area,
Douglas County

Highway 95/Bell Bridge
Highway bridge
public access
mile marker 16.3
Highway 95 near Rockbridge

**Hodgson Mill/
Sycamore access**
MDC access
mile marker 25.9
Highway 181, Sycamore

Warren Bridge
MDC access
mile marker 33.3
County Road 329, Tecumseh

**Tecumseh bridge and
access**
U.S. Army Corps of
Engineer public river/lake
access
mile marker 49.5
Highway 160, Tecumseh





***We Are The Perfect Spot For:
Summer family vacations. Weekend getaways.
Spring and fall hunting seasons.***

- Full hook-up RV sites • Tent camping
- Cabin rentals • Canoe and kayak float trips

Book Now...417-256-7507
www.twinbridgesmo.com



417-255-9260

**Follow us on Facebook at
facebook.com/WhatHappensAtTheBridges/**

**Open
Tuesday-Sunday**

**Breakfast. Lunch. Dinner.
Daily Specials**

***Karaoke and live
entertainment
on weekends***

**Located along the beautiful North Fork River and
surrounded by the Mark Twain National Forest**

Family Friendly • Affordable
Wide Variety of Food

Delicious Homemade Pies
Dine-in or Made-to-order

WINTER HOURS: 6 a.m.-8 p.m. daily
SUMMER HOURS: starting Memorial Day weekend
6 a.m.-9 p.m. daily, Kitchen closes at 7 p.m.

21440 St. Hwy. 181 • Dora
417-261-2810



YOUR LOCAL HOODOO KAYAK DEALER

ENJOY FLOATING THE NEARBY NORTH
FORK RIVER ANYTIME OF THE YEAR
IN YOUR OWN HOODOO KAYAK



A Hirsch Feed dealer!



Various grass and food
plot seeds available for
reseeding this spring!

Full line of garden
seed, ammendments
and potting/garden soil

WE CARRY VET SUPPLIES!

UNSPOILED LAKES

Bull Shoals and Norfolk Lakes in Ozark County and the surrounding area provide a quiet, peaceful destination for boating, swimming, fishing, water sports, snorkeling, scuba diving and best of all - relaxing.



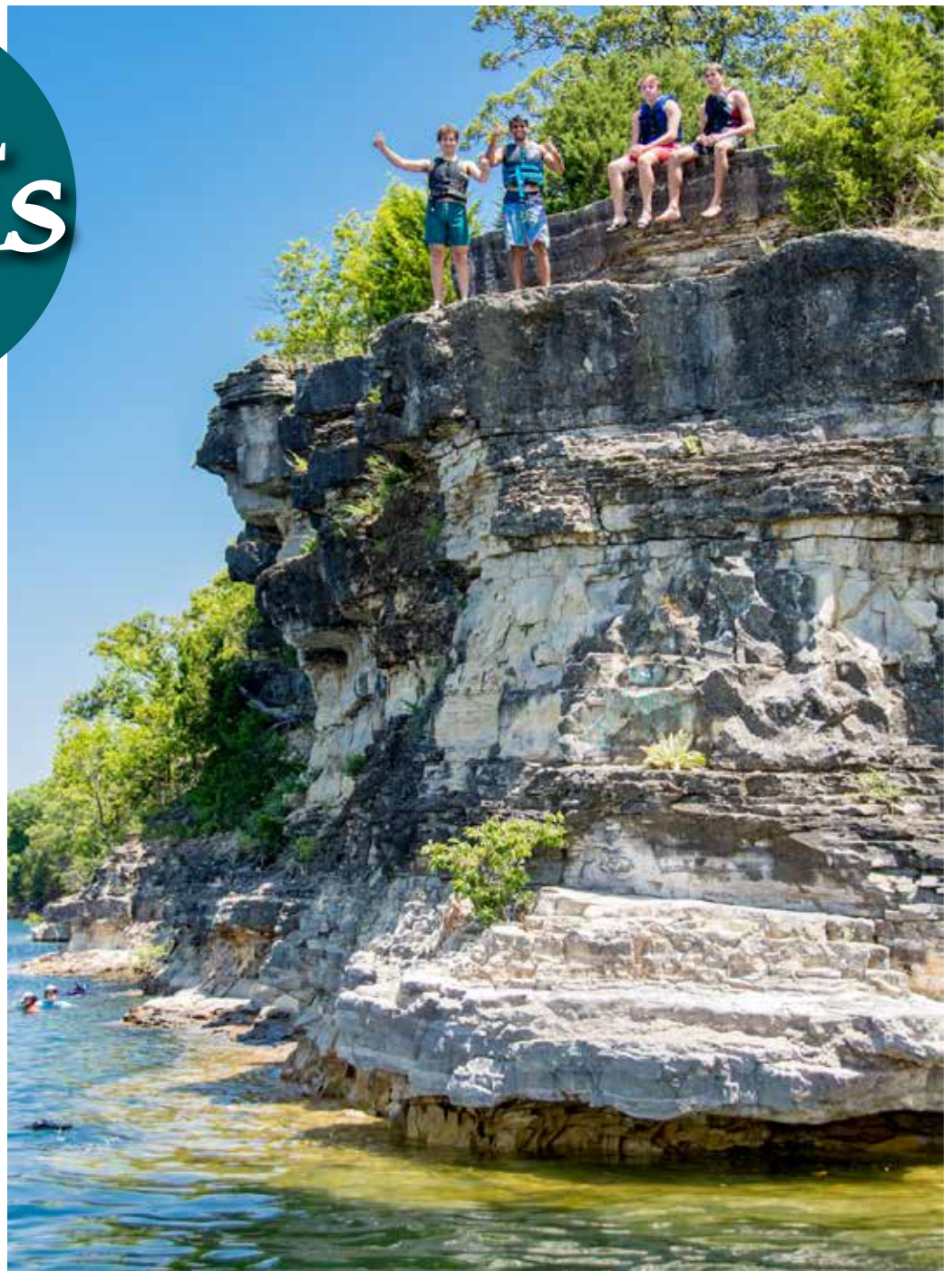
One of the Ozarks' best kept secrets, Bull Shoals and Norfolk Lakes in Ozark County are known for their quiet and serene nature. Visitors from busier areas are surprised at the lack of lake traffic. It can often feel as if you have the lake to yourself. Photo by Lonnie Schmidt.

BULL SHOALS

Lake

Bull Shoals Lake features open stretches perfect for boating; quiet, secluded coves great for swimming and water sports; clear, uncrowded water for scuba divers; and 48,195 surface acres of water that offer rewarding fishing for largemouth and small-mouth bass, crappie and striped bass. Whatever your lake plans, Ozark County's two concessionaire-operated marinas (described below) can get you going.

Pontiac Cove Marina is a full-service marina, campground and resort located in Pontiac off Highway W southwest of Gainesville. Amenities include nightly and long-term boat slips, boat rentals, fuel dock, scuba air station and a convenience store/gift shop with bait, tackle, Missouri fishing licenses, boating accessories, stand-up paddleboards, towables, souvenirs, snacks, soda and beer. Stay at one of Lake Harbour Resort's six fully furnished suites or at the Red Barn Lodge, which sleeps 10, and Loft, which sleeps five. Eat at Just Jackie's restaurant located within the park and accessible to boaters. The Pontiac bluffs on the northwest corner of the park are a favorite jumping-off point for lake-going daredevils. 417-679-3676. pontiaccove.com. See ad, page 21.



The infamous "Pontiac bluffs" are pictured here in this photo by David Crane. The bluffs serve as a popular spot for thrill-seeking locals and visitors alike, who jump off the rocky cliff into the waters of Bull Shoals below. The bluffs can be accessed from the rear of the campground at Pontiac Cove.

Theodosia Marina Resort, off Highway 160 in Theodosia, offers rentals of a variety of boats and equipment for fishing and fun on the water. A boat-and-motor sales and repair facility is affiliated with the marina. Marina staff can help you connect with local fishing guides, and the marina's gift shop/convenience store sells fuel, picnic supplies, beverages, fishing tackle and bait, water skis, boat accessories, clothing and novelties. The marina also offers short- and long-term boat-stall rentals. Nearby Fort Cook offers several types of lodging choices plus pads for motorhomes and a swimming pool for guests. The resort's adjoining campground and nearby Corps of Engineers boat ramp stay busy throughout the summer season. Cookie's restaurant is a popular eatery for tourists and locals alike. 417-273-4444. tmrbullshoals.net. See ad, page 3.

A family resort on Bull Shoals Lake

Cabins. RV sites. Heated salt water pool.
Walking distance to Pontiac Cove Marina.
Picnic tables. Fire ring.



roobdoofamilyresort.com • 417-679-4174

41 Roo B Doo Circle • Pontiac, MO • relax@roobdoofamilyresort.com

Serving Southern Missouri For More Than 20 Years!



Your First Choice In Real Estate

HOMES. FARMS.
RANCHES.
ACREAGE.
RECREATIONAL.
HUNTING PROPERTY.
RURAL PROPERTY.
AND MORE



MICHELLE VIVERO
REALTOR - Broker
Associate



ALBERT VIVERO
Realtor

1stchoice-realty.com
www.PontiacMo.com

39 Roo B Doo Circle
Pontiac, MO

417-967-2001

Lakehouse Vacation Rental

Pontiac, MO



5 minutes from beautiful Bull Shoals Lake. Fully furnished house for large groups, sleeps 11 people. Have fun on the lake eat some pizza at Just Jackie's then relax at Lake Bums BrewCo. Nice quiet relaxing area.

417-679-4292

for inquiries



Two night minimum or could be open for other arrangements.

WE LOVE FIREWORKS!

Foggy Bottom Fireworks

Weddings. Parties. Special Events.

THE BEST FIREWORK SHOW AROUND!

including the Pontiac Fireworks show over Bull Shoals Lake

Licensed
pyrotechnics
and service
several states.

Kirk and Segri • 816-564-0267
63 Farrier Dr., Pontiac, MO
Find us on Facebook!

20 years of ATF licensed
shows and going strong.

Kyrin Shook Photography

Make your
reservation for these
great rentals today!



Red Barn Lodge & Loft



Lake Harbour Resort



Indian Point Lodge
& the Gray Barn

Perfect for family
reunions, weddings,
group retreats and more!



Local family-owned since 1964



Pontiac Cove Marina And Lake Harbour Resort

417-679-3676 • pontiaccove.com • info@pontiaccove.com



Full service resort

Marina • Campground • Lodging • Just Jackie's Restaurant

FRONTIER BAPTIST CHURCH

Sunday School 10 am
Sunday Morning Service 10:45 am
Wednesday Night Youth Program
Dinner 6:30 pm • Service 7 pm
Wednesday Bible Study 7 pm

BRUCE DEWEESE
PASTOR



Hwy. W to CR 609 • Pontiac, Missouri



on Facebook search for
Pontiac Anchor Down Resort



- 7 units (sleeps 2-6 guests)
- Newly remodeled with new appliances, furniture, TVs,
- Stocked with coffee pot, toaster, dishes, silverware, pots & pans, linens
- grill and deck • firepit
- room for boat parking



Located at 10 County
Road 609, Pontiac
Off the sharp curve
on Hwy W.

*Life is just better in
a cabin at the lake...*



Each beautiful cedar cabin at Lost Cove
Resort features:

758 sq ft, room for the whole family!

- 2 bedrooms, each with a queen bed • Queen-sized sleeper sofa
- Futon couch/bed combo in living area • Full kitchen with dishwasher • BBQ grills, free wifi, large screen TVs • Covered porch with patio furniture • Satellite, central heat and A/C

We're pet friendly! Call for details.

LOST COVE RESORT

58 Stringray Lane, Pontiac, MO

417-679-2424

www.lostcoveresort.com

mistydawnkirvan@gmail.com

OPEN
Year round
Call for
seasonal
hours



Good friends, good times

Great beer.

LAKE BUMS BREWCO



Camping or boating in to Pontiac? Eating at Just Jackie's?

Call us at (417) 679-0070 or (417) 679-3676

We'll pick you up in our free shuttle, the "Brewer!"

www.lakebumsbrewco.com

112 Parrothead Lane • Pontiac, MO • Only brewery on Bull Shoals Lake!



NORFORK

Lake

This photo, taken by Rob Jeckstadt, shows the view from a cliff located where Bryant Creek and the North Fork of the White River meet as both rivers flow into Norfolk Lake at Tecumseh. The spot is known by locals as “the Forks.”

About 2,000 acres of the 22,000-acre Norfolk Lake extend into Missouri. Recreation is recognized as an important resource, attracting fisherfolk and water-sports-loving lake-goers who enjoy the Norfolk’s clear, spring-fed water. For a beautiful overview of Lake Norfolk, drive across the Highway 101 bridge south of Bakersfield.

Access/boat ramps.

The popular Tecumseh access on Norfolk Lake off Highway 160 was recently rebuilt by the U.S. Army Corps of Engineers, and offers lake-goers a boat ramp, separate kayak/canoe ramp and large parking lot. Other boat accesses on Norfolk Lake in and near Ozark County include Bridges Creek (known locally as “Stump Hole”) located off County Road 551B (Smokey Road), Udall on O Highway, Liner Creek off T Highway, and Calamity Beach on Baxter County Road 24 off Arkansas Highway 201 in Clarkridge, Arkansas. Ozark County is a good base for exploring the rest of the lake, which extends south into Arkansas.

Fishing.

Fishing is a popular pastime on Lake Norfolk. Anglers can catch bass, walleye, crappie, striped bass, catfish and other species. The Tecumseh access of Lake Norfolk off Highway 160, an especially popular fishing spot for the annual spring white bass run, is usually preceded by good walleye fishing followed by excellent hybrid catches.

History.

Norfolk Lake, like Bull Shoals, is in the White River Basin. Both were originally built for flood control and power generation. President Harry Truman came to the Ozarks in July 1952 to dedicate both Norfolk and Bull Shoals dams, constructed and maintained by the U.S. Army Corps of Engineers in Arkansas a few miles south of the state line.

Visit the Norfolk dam.

The Norfolk reservoir is formed by a large concrete dam across the North Fork of the White River four miles upstream from where the North Fork runs into the White River at the City of Norfolk, Arkansas. It also serves as a bridge across the river gorge. The dam is less than an hour’s drive south of Gainesville, and a great nearby visitor’s center about the dam offers an interesting educational experience for guests of all ages.

Big Creek Resort on Bull Shoals Lake



8 fully furnished cabins with lake view.
Boat slips available upon reservation. Pet friendly.

417-372-7430

www.bigcreekresort.biz
2247 CR 644, Theodosia



Lakewoods Resort

10425 S. State Hwy 125 • Protem, MO 65733



Cabins | Pool | Boat Rentals | Dock Slips

417-785-4325

lakewoodsresort@gmail.com
www.lakewoods-resort.com



**THEODOSIA MARINE
SALES &
SERVICE**



**Authorized Service for: Mercury
Outboards and Mercruiser Stern Drives**
417-273-2026 • Hwy 160 Theodosia

THE FOUNTAIN CHURCH 6084 US Hwy. 160 – Theodosia



Full Gospel

THURSDAY:

5 p.m. Meal for Everyone

6 p.m. Youth Activities & Adult Intercessory Prayer

SUNDAY:

9:45 a.m. Bible Study for All Ages

10:30-11 a.m. Meet & Greet

11 a.m. Worship Service



Handicap Accessible

Pastors Burl & Dawn Marie Norton
417-989-0369

email: thefountainchurchtheodosia@gmail.com

MOONSHACK



stay • unplug • recharge



a dream made reality

A perfect escape from the “real” world.
--- *Molly*

Exactly what we needed. --- *Tori*

This place has a overwhelming feeling
of peace and tranquility. --- *Luis*

To say we enjoyed ourselves would be
an understatement! --- *Jessica*

Exceeded expectations. --- *Mitchell*

First impressions of the Moonshack are
completely magical...exactly what the
doctor ordered. --- *Byron*

A wonderful little slice of heaven! ---
Tara

A gem in the woods. --- *Dana*

It was a magical time for us and our
family...It doesn't matter where you are.
It's worth the drive to come experience
this little slice of heaven. --- *Garrett*



Are you looking for a place to disconnect, a place of peace and rest? This secluded, solar powered, off-grid cabin on 50 acres in the Ozark Mountains is located right next to a beautiful spring that runs down to a dam and waterwheel. The sounds of water and nature will be all you hear.

Go to [airbnb.com](https://www.airbnb.com)

Type in Thornfield, MO, in the Anywhere box

Listed as “Cabin in Thornfield”

The Moonshack

To view the cabin build, go to Youtube.

Just search Moonshack and check it out!!

Cabins, resorts and other lodging



PLACES TO STAY

Ozark County has lodging for just about anyone. Lake goers, river floaters, small-town charming and get-away-from-it-allers. The Moonshack, pictured above, falls into the latter category. The off-grid home is located on 50 acres of remote Ozark mountain property bordered by national forest on three sides.

Bull Shoals Lake

Big Creek Resort

2247 County Road 644, Theodosia
417-372-7430
bigcreekresort.biz

Big Creek Resort on Bull Shoals Lake is located on the Big Creek arm of the lake and features eight fully-furnished cabins with kitchens, bathrooms, air conditioning, heat and TVs. The cabins were renovated in 2008 and the furniture was custom-built by a local craftsman. The grounds feature a gazebo, fire pit overlooking the lake, playground, laundry and shower house and a small store. See ad, page 24.

Lakewoods Resort

10425 S. State Highway 125, Protem
417-785-4325
www.lakewoods-resort.com;

Lakewoods Resort on Bull Shoals Lake offers 22 modern 1-, 2-, 3- and 4-bedroom cabins for guests of varying group sizes. Some cabins have a view of Bull Shoals Lake, while others are situated next to the resort's pool. The resort also offers a swimming pool with shaded areas, a pavilion for large groups. Those staying at Lakewoods Resort can rent pontoon, fishing and paddle boats at the resort and take advantage of the 24-stall covered and lighted steel dock with electrical outlets. See ad, page 24.

Lost Cove Resort

58 Stingray Lane, Pontiac
417-679-2424
www.lostcoveresort.com

Lost Cove Resort, located on W Highway in Pontiac, offers five cedar-sided cabins. The cabins feature two bedrooms, a full kitchen with dishwasher, Weber BBQ pits, a small covered porch with patio furniture, individual fire pits, satellite television and central heat and air. There is a queen-sized bed in each bedroom, a queen-sized sleeper sofa and a futon/combination couch sleeper in the main living room of each cabin. The resort is pet friendly. Inquire about the pet policy and rates by calling the resort. See ad on page 22.

Pontiac Anchor Down Resort

County Road 609, Pontiac
417-543-4352
pontiacanchordownresort.com

Pontiac Anchor Down Resort offers seven recently remodeled rooms which can accommodate 2 to 6 guests each. All the rooms have been remodeled with new appliances, furniture and TVs. Each unit comes fully supplied with a coffee pot, toaster, dishes, silverware, pots and pans and linens. The resort also has a grill, deck and fire pit area open to guests, along with boat parking. This resort is located less than a mile from the Pontiac Cove Marina, Just Jackie's restaurant and Lake Burns BrewCo. See ad, page 22.

Stay at the RIVERHOUSE



Find out more



SCAN ME



SCAN ME

Enjoy the serenity of the
country in this rural location.

Take a drive & explore the historic mills
in our area. Enjoy nature & go on a hike
on trails in Mark Twain National Forest
or at Caney Mountain Conservation Area.
Go for a float down the Norfolk or
Bryant river & relax & enjoy all the
natural beauty.

Scan below
to book directly



Contact Us :
riverhouse.ozarksvacationrental@gmail.com



Cabins, resorts and other lodging

Bull Shoals Lake



Lake Harbor Resort at Pontiac Cove

Pontiac Cove Marina

W Highway, Pontiac
417-679-3676
www.pontiaccove.com;

Pontiac Cove Marina, located in Pontiac cove on Bull Shoals Lake, features lodging options at Lake Harbour Resort and the Red Barn Lodge & Loft. Pontiac Cove Marina also manages Ozark County's only craft brewery, Lake Bums BrewCo, located just across the highway from the marina and resort grounds within walking distance. Just Jackie's, a full-service restaurant, is also located on the resort grounds.

Lake Harbour Resort is a modern building near Bull Shoals Lake with units decorated in a modern coastal cottage style. The building features several suites with one king-sized bed or two queen-sized beds, a blow-up bed with bedding (for guests with children), fully-stocked kitchen with full-size appliances, indoor and outdoor dining tables with chairs, flat screen-TV with satellite, free wireless internet, patio downstairs or balcony in upstairs units with a seasonal lake view. A covered pavilion with BBQ grill, hammocks, fire pit with provided wood and horseshoe pits are also available to all guests.

The Red Barn Lodge & Loft are located on the grounds of Lake Bums BrewCo. The lodge sleeps 10, and features four bedrooms (two king beds, one queen bed and two sets of bunk beds), two bathrooms, flat-screen TV, free wireless internet, heat/air conditioning, kitchen, a wrap-around covered porch with outdoor furniture, a BBQ grill and a fire pit with provided wood. The one-bedroom loft features a queen bed, a twin sleeper sofa and one set of bunk beds in a separate "bunk room." The loft also has flat-screen TV, free wireless internet, heat/air conditioning, microwave, coffee maker, mini refrigerator and a fire pit with provided wood. See ad, page 21.



Bull Shoals Lake by Gary Smith

Roo-B-Doo Family Resort

41 Roo B Doo Circle, Pontiac
417-679-4174
roobdoofamilyresort.com

Roo-B-Doo Family Resort in Pontiac, a resort within walking distance of Pontiac Cove Marina, has a variety of cabins and RV sites available. The resort also features a heated salt water pool on the premises, along with picnic tables and fire rings. See ad, page 20.



Otter Creek Lodge at TMR

Theodosia Marina Resort (TMR)

Off Highway 160, Theodosia
417-273-4444
tmbullshoals.net

Theodosia Marina Resort on the shore of Bull Shoals Lake offers accommodations for all sized groups including a motel that features two-bedroom units (each with a queen bed), nearby two-bedroom apartments, Cove View cabins that feature two bedrooms with double beds, a 5-bedroom lake house, the four-bedroom Red Cedar Lodge and the 2,000 square foot Otter Creek Lodge which features eight bedrooms. Guests of TMR's lodging and RV park have access to the resort's recreational facilities that include a large in-ground swimming pool, a coin-operated laundry facility, basketball court, lighted tennis court, a banquet room and outside patio and a shower house with restrooms. A full-service restaurant, Cookie's, offers meals seven days a week during the spring, summer and fall. See ad, page 4.



Lakehouse vacation rental

Lakehouse vacation rental

W Highway, Pontiac; 417-679-4292
VRBO # 242402;

This full-furnished vacation rental has three bedrooms and sleeps up to 11 people. It includes a spacious living room with two couches, a recliner and plenty of room for the whole family to stretch out. A TV and DVD player offers guests entertainment when they're not enjoying Bull Shoals Lake, which is a five minute drive away. The home includes a full kitchen, dishwasher, washer and dryer and barbecue grill. Two outside decks are perfect for watching wildlife or sitting and relaxing around a fire pit. See ad, page 21.

Norfolk Lake

Whispering Woods Cabins

4245 Highway 177 South, Jordan, Arkansas
870-499-5531
<https://www.whisperingwoodsar.com/>

Whispering Woods Cabins is located in Jordan, Arkansas, with a view of Norfolk Lake. A 30-minute drive from Ozark County, Whispering Woods features 11 cabins with charcoal grills, picnic tables, flat screen TVs with satellite, full size stove, refrigerator, microwave, coffee pot, toaster, dishes and cooking utensils. A guest laundry and playground are located on the premises. The resort also offers gourmet dining at an on-site restaurant The Grill at Whispering Woods. Owner Richard Quiblier received his culinary training in Lausanne, Switzerland and worked there for 20 years before he and wife Kim (a native to England) moved to the United States and purchased Whispering Woods. See ad, page 88.

Continued to page 30



Antler Motel
417-679-4292

WHERE COMFORT & OZARK COUNTY
HOSPITALITY AWAITS YOU

ANTLER MOTEL
GAINESVILLE MISSOURI 190 THIRD STREET
417-679-4292



TOM PETERSON
417-989-1140

Licensed & Insured

Free Estimates

Follow us on Facebook

WHIPPOORWILL HOLLAR
FARMS LLC
EXCAVATING & FENCING

Douglas County and the surrounding area

Theodosia Family Medical Clinic & Spa

Now Accepting New Patients



Dr. Masa, MD • Dr. Aaron Newton, MD
Erin Carlile, NP

MEDICARE & MEDICAID ACCEPTED
Cox & Blue Cross • Anthem
United Healthcare • Coventry One
TriCare • Humana • Coventry • Other
Private Insurances Welcome
SLIDING FEE SCALE AVAILABLE

**Massage • Facials • Chemical Peels
Microdermabrasion**

417-273-2300
Monday-Friday 9 a.m.-5 p.m.
Highway 160 • Theodosia



Suzanne Landry; Kayla Smith; Erin Carlile, NP;
Belinda Wyman; Meredith Hayes; Lisa Duggan, owner
and licensed medical aesthetician; Dr. Masa, MD; Dr.
Steve Troeger, DC; and at left Dr. Aaron Newton, MD



Cabins, resorts and other lodging

North Fork River

Pettit's Canoe Rental

9000 County Road 354, Caulfield
417-284-3290
pettitscanoerental.wixsite.com

Pettit's Canoe Rental, on the banks of the North Fork of the White River, offers cabins near the North Fork of the White River, in addition to camping on the riverbank. The cabins include "the big cabin," which comfortably sleeps 8 people with four queen beds and includes a fully equipped kitchen with stove, microwave and refrigerator, pots and pans, large bathroom with shower and tub, towels and bed linens, sitting area with chairs and ottomans, air-conditioning and heat and an outdoor dining area with a fire pit. Other options include the resort's "sleeper cabins," which sleep six people comfortably with three full beds. The sleeper cabins include table and chairs, air conditioning, heat, picnic tables and fire pit. The sleeper cabins are in close proximity to the campground's toilets and showerhouse and is near a walking trail that leads down to the campground and river. See ad, page 12.



Roosevelt camper at Sunburst Ranch

Sunburst Ranch

776 County Road 352, Caulfield off H Highway
Caulfield; 417-284-3443
sunburstranchcanoe.com

Sunburst Ranch, on the North Fork of the White River, features more than a mile of riverfront. In addition to camping, Sunburst Ranch offers several full-service cabins, attractively decorated vintage campers - and even a renovated airplane hangar that sleeps up to 16 people. A camp store has supplies and souvenirs; ice and firewood are also available. The resort rents canoes, rafts and kayaks, and provides shuttle service for float trips for its guests. See ad, page 12



Small cabins at Twin Bridges Resort

Twin Bridges Resort

Highways 181 and 14 northeast of Dora
417-256-7507
www.twinbridgesmo.com

Twin Bridges Resort offers several cabins along the banks of the North Fork of the White River that sleep up to 12 guests. The small cabins have a mini-fridge, microwave and a bathroom with a shower. Larger cabins have full-sized kitchens. A general store and a popular restaurant, Twin Bridges Bar & Grill, operates on site. The resort rents canoes and kayaks. See ad, page 16.



Antler Motel in Gainesville

Small town lodging

Antler Motel

Third Street/Highway 5 North, Gainesville
417-679-4292
See ad, page 29.

The two-story Antler Motel has been a mainstay in Gainesville for decades. The motel features clean and reasonably priced rooms in a convenient location in Gainesville. The Antler Pizza and Package store stands next door, making mealtime an easy walk away. Groceries, gas and other businesses are all located within a few miles of the motel. See ad, page 29.



*Silas Ragan playing on Bryant Creek.
Submitted by grandfather Russell Munson.*

Bryant Creek

Riverhouse on Bryant Creek

192 County Road 331, Tecumseh
417-712-1235
See QR codes on ad, page 27

The Riverhouse sits on the banks of Bryant Creek, a remote area in Ozark County known for its natural beauty and quiet surroundings. The 3-bedroom, 3-bathroom house is the perfect place to get away from the hustle and bustle of regular life and escape into nature. The house sleeps up to 10 guests and includes a full kitchen, TV with limited channels, DVD player with DVDs, washer and dryer, board games, puzzles and cards, lawn chairs on a covered porch, sheets, blankets and fans. See ad, page 27.



*Bald eagle in Ozark County.
Photo submitted by Rhonda Herndon.*

Continued to page 32



Real Estate
Farm
Farm Machinery
Heavy Equipment
Antiques
Firearms
Business Liquidation
Personal Property
Estates
Livestock
Acreage

**SERVING ALL
 OF THE
 OZARKS**

Ozark
 Douglas
 Wright
 Webster
 Christian
 Taney

**We can and will
 travel anywhere.**

**We offer a professional auction service that
 you'd expect and the personal touch you want**

*Multiple estates and
 consignments all in
 one place.*

*More consignments
 welcome!*



Travis Cheyney

(417) 543-8751

cheyneyauctions.com/

facebook

Think Auction. Think Cheyney.
It's who we are. It's what we do.

**If you're in Ozark County,
 I'm for you.**

If you've got a home, a vehicle, or a life, we're for making sure it's protected. No matter what you do, what you drive or where you live, we treat you with the same respect you'd expect from the farmers that started this company.



Lowell Strong
 Agent

417-679-3935
LStrong@mofb.com



MISSOURI FARM BUREAU INSURANCE

We've got Missouri covered.

AUTO HOME LIFE

**DON'T SUFFER
 WITH BUFFER**

Create the
 ultimate streaming
 experience with
 Wisper high-
 speed Internet.

**WISPER
 INTERNET**

(800)765-7772

www.wisperisp.com

Speeds up to 400 MBPS



Cabins, resorts and other lodging

Historic Mill



Historic Rockbridge Mill

Rockbridge Grist Mill/ Rainbow Trout and Game Ranch

4297 County Road 142, Rockbridge
www.rockbridgemo.com
417-679-3619

This 2,000-plus acre resort in the heart of the rural Ozark Mountains features one of Ozark County's iconic and historic grist mills, making it the perfect setting for a family vacation or relaxing couple's getaway. The resort offers lodging options that range from affordable motel rooms and suites to luxurious multi-bedroom log cabins. Rockbridge's stunning spring-fed Spring Creek offers an exciting opportunity for all kinds of fishermen, from the novice to the expert. Rockbridge is privately owned so guests do not have to have a Missouri fishing license or a trout stamp to fish there. Guests can also take advantage of the on-site Gun Club, which offers shooting sports as well as guided whitetail deer and wild turkey hunts. Two eateries are available on the grounds. The Grist Mill Club, a pub-style bar and restaurant housed in a historic 1800s grist mill, offers guests an open-air dining area for drinks and appetizers from April through October. Those seeking a casual, fine dining experience can find a full menu of creative dishes at the resort's main restaurant. Fisherman can bring their freshly-caught trout to the on-site fish cleaning staff to clean and either package or pass on to the restaurant's chef to cook for dinner. See ad, page 8.



Ralph's Ridge cabin

Away from it all



The Moonshack

The Moonshack

Thornfield
airbnb.com "Cabin in Thornfield"

This secluded, solar powered, off-grid cabin is located on 50 acres in the Ozark mountain area of Thornfield and is surrounded on three sides by the Mark Twain National Forest. The home sits next to a spring that runs down to a dam and waterwheel, providing the serene sound of nature at any time during the year. Most of the Moonshack's guests choose the cabin to visit in order to completely disconnect from everyday life and reconnect with what's most important. The Moonshack was built from mostly recycled material from an old barn from the owner's family's property. Solar panels provide electricity, and a back-up generator is also installed. With the off grid experience - guests get a flushing stool, an outdoor shower, air conditioner, a 1920s propane cook stove, a 1920s claw foot tub and hammocks both indoor and out. The seating is inviting and comfortable, the vibe is mid-century/rustic and the outdoor area is stunning. The loft area of the cabin houses three twin beds and a futon for sleeping. The loft also has a kids living area and adult living area. The hammock swing wraps up the cozy feel of the place. The main bedroom has a queen-size bed and a dresser. Other living space is open and inviting. There are hiking trails on property. Feel free to bring your own ATV or mountain bike. The Moonshack is located in a rural area, and the owners recommend driving an AWD or 4x4 vehicle to get to the place. See ad, page 25.

Home to Wildlife



Black bear by Lonnie Schmidt



Whitetail deer by Lonnie Schmidt



Roadrunner by Lonnie Schmidt

FIRST CHRISTIAN CHURCH

DISCIPLES OF CHRIST



*invites you
to visit and
worship
with us.*

**Sunday School
10 am**

**Sunday Worship
11 am**

Handicap Accessible

*Call church office ahead of time
for transportation*

Our members come from many different religious backgrounds to form one large Christian community built around the table where we celebrate unity in diversity. Here at First Christian we encourage you to make this your Christian "home" too.



Hwy. 160 • 1-1/4 Mile East of the Gainesville Square • 417-679-3520



Whatever your dream is, make it come true.



At Stockmens Bank your loan is not just another account to us. We care about your dreams, and we'll be there beside you every step of the way.

HOME • FARM • COMMERCIAL • MARINE • AUTO • MOTORCYCLE



STOCKMENS BANK

25 Elm Street • Gainesville,
Missouri • 417-679-3080 •
Stockmensmo.com



Big Town Store in a Small Town

Deli Platters - Made To Order

5 for \$25
Fresh Meat Specials

Fresh Fruits & Vegetables

Fresh Quality Meats

Bakery Bread & Dessert Items

Smoked Meats



OPEN 7 DAYS
A WEEK

Gainesville, MO • 417-679-4584
Store Hours: 6:30 a.m.-9 p.m.

Get Matched With the Right Health Insurance



Flexible Premiums & Deductibles

**Affordable and Convenient Quality
Healthcare Options Are Here.**

- Local Agents
- Free Info
- Step by Step Help
- Free Advice



Healthcare Enrollment Center

417-683-1035

care@cornerstoneagency.net

306 E. Lincoln Ave., Ava



Dan & Woan Chuei Ricciardelli

BOYD GARRISON ENTERPRISE, INC.



**TIRE & AUTO
SERVICE**  **CONVENIENCE STORE
& GAS STATION**
417-273-5063 417-273-4798


Hwy. 160 • Theodosia, Missouri 65761



THEODOSIA METHODIST CHURCH



Sunday Worship • 8:30 a.m.
Tuesday Afternoon Bible Study • 1:30 p.m.

Pastor John Goldman 
Hwy. 160 • Theodosia, MO

417-273-4312

E-mail: theodosia000@centurytel.net



Tina Jackson
Broker-Sales/Co-Owner
417-293-6602



Heidi Rader
Broker-Sales/Co-Owner
417-274-6816



Clinton Howell
REALTOR®
417-270-0490



Teresa Guilliams
REALTOR®
417-257-5478



Rhonda McFarland
REALTOR®
417-293-5172



Carrie Brassfield
REALTOR®
417-252-1086



Teresa Cockrum
REALTOR®
417-257-4039

www.MovingToTheOzarks.com

417-255-1500

vantage@movingtotheozarks.com
1713 US Hwy. 160W, West Plains, MO

Licensed in Missouri & Arkansas



CANEY MOUNTAIN

Conservation Area

Nearly 8,000 acres of public land includes high-quality forest, woodland and glades providing opportunities for recreation, hiking, horseback riding, wildlife viewing, hunting, camping and more.

OWNER: Missouri Department of Conservation
ACREAGE: 7,899 acres including 1,300 of wildlife refuge
CONTACT: 417-679-2363
GPS COORDINATES: 36.58568° N, 91.14006° W
HOURS: Open 30 min. before sunrise to 30 min. after sunset
WEB: nature.mdc.mo.gov/discover-nature/places/caney-mountain-ca

Wildlife viewing.

This conservation area helped nurture the rebirth of the eastern wild turkey after the state's population dropped to fewer than 2,500 birds. Today wild turkeys flourish here, as do whitetail deer, squirrels, birds and many other native species. Bald eagle sightings are common, especially during the winter. Two wheelchair-accessible wildlife viewing blinds, placed on the edges of managed food plots, provide a good opportunity for visitors to spot wildlife and take photos. Find the viewing blinds on the map, page 37.

Bring creek shoes.

Get your toes wet, look for crawdads or just enjoy the sound of natural water surrounding you in Caney Mountain Conservation Area's water features. The area includes 112 intermittent streams including the 3-mile-long Caney Creek, the Spout Spring and over 40 fish-less ponds

Take a hike on Caney Mountain Conservation Area's designated hiking trails or get off trail to see what you can explore. Photo by Rob Jeckstadt.



Take a hike.

Two designated hiking trails weave through the center wildlife refuge section of Caney Mountain Conservation Area. The **Spout Spring Trail** is an easy 1.5-mile out-and-back trail that passes through a variety of surroundings and runs along a creek, giving a glimpse of Spout Spring near the end. The **Long Bald Nature Trail** is a half-mile loop through glade country. Dozens of other unnamed multi-use trails, gravel roads and forestry roads run throughout the acreage and can be used by the public for hiking, bicycling or horseback riding. Maps are generally not available at the conservation area, so it's wise for travelers to download or bring their own before visiting. A map is available on page 37 or at <https://nature.mdc.mo.gov/sites/default/files/downloads/conservation-areas/5202map.pdf>.

Visitors and residents can sight in weaponry at one of three ranges at Caney Mountain Conservation Area. The archery range features a static range as well as field targets with a tree-stand platform available for use. The rifle and handgun range features target distances of 25-100 yards, and a range restricted to muzzleloaders includes two stations with 50- and 100-yard distances.

Camping.

Pitch a tent or bring an RV to camp at one of the many campsites within the park. They include privies, fire rings and picnic tables.

Views

Caney Mountain features three scenic overlooks with picnic tables atop Preston Flats (see map, page 37) that allow visitors to witness Ozark County's spectacular views. All three spots are marked by "scenic vista" signs. One vista features a view that stretches all the way to Arkansas.

Public/managed hunts

Public hunting: Caney Mountain Conservation Area is separated into three zones, and two of them – Zone 3 on the north end and Zone 2 on the south end – are open to public hunting. Hunting is prohibited in the center (Zone 1) "natural area," except for managed deer and turkey hunts. **Managed hunts:** The center of the Caney Mountain Conservation Area, zone 1, is considered the natural area or wildlife refuge. This 1,100-acre section is closed to public deer and turkey hunting all year with the exception of a few managed hunts that include a muzzleloader deer hunt, an archery deer hunt, spring archery and shotgun turkey hunts and a youth-only spring shotgun turkey hunt. Participants are selected for the managed hunts in a lottery drawing, with application deadlines submitted several months ahead of the hunts. For more information or to submit an application to be considered for a management hunt, visit huntfish.mdc.mo.gov.

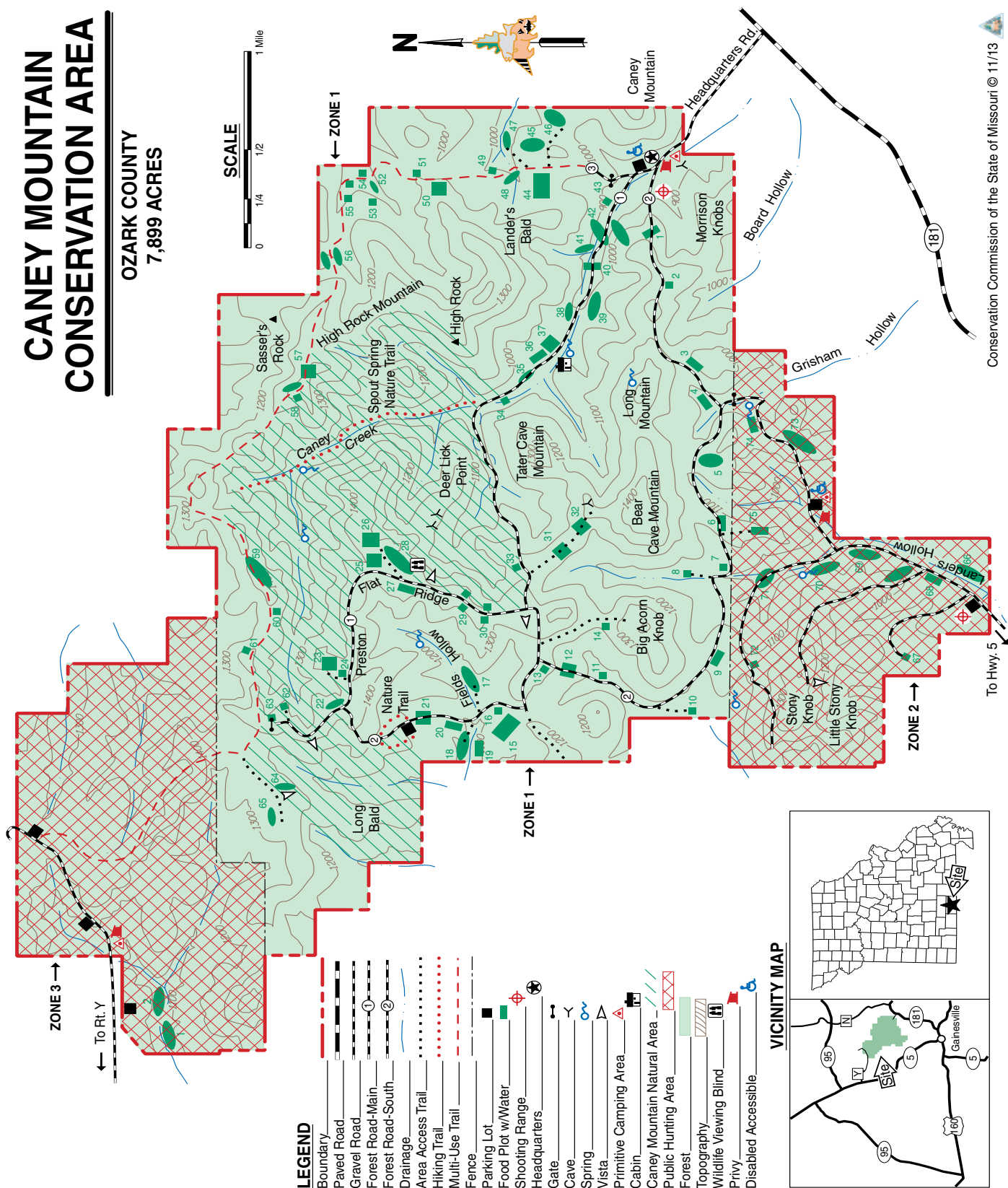
Directions

Caney Mountain Conservation Area has three access points. All directions are from Gainesville. **Zone 1:** Take Highway 181 north 5 miles. Turn left onto Headquarters Road, the graveled entrance to the conservation area. **Zone 2:** Take Highway 5 north 2 miles. Turn right onto County Road 107 and continue for a half-mile. **Zone 3:** Take Highway 5 north 10 miles. Turn right (east) onto Highway Y and drive 3 miles, then turn right onto County Road 116. Continue until you reach the entrance.

CANEY MOUNTAIN CONSERVATION AREA

OZARK COUNTY
7,899 ACRES

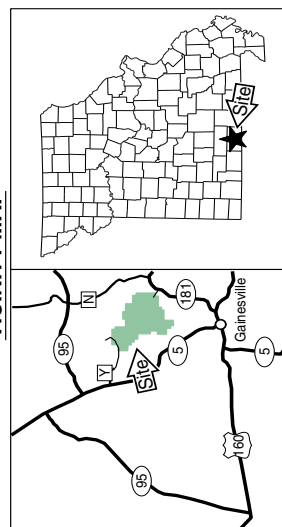
SCALE



LEGEND

Boundary	—
Paved Road	—
Gravel Road	—
Forest Road—Main	①
Forest Road—South	②
Drainage	—
Area Access Trail	—
Hiking Trail	—
Multi-Use Trail	—
Fence	—
Parking Lot	—
Food Plot w/Water	—
Shooting Range	—
Headquarters	—
Gate	—
Cave	—
Spring	—
Vista	—
Primitive Camping Area	—
Cabin	—
Caney Mountain Natural Area	—
Public Hunting Area	—
Forest	—
Topography	—
Wildlife Viewing Blind	—
Privy	—
Disabled Accessible	—

VICINITY MAP



Due to little-to-no cell phone reception, and no visitor display maps at the conservation area, visitors are encouraged to bring a map of the area with them when exploring Caney Mountain Conservation Area. This map is available on the Missouri Department of Conservation website at <https://nature.mdc.mo.gov/sites/default/files/downloads/conservation-areas/5202map.pdf>.

Meet the hardest working family in agriculture.



RTV-X1100

GET THERE: With a powerful 24.8 HP* Kubota diesel engine, the RTV-X1100 is redefined, rugged and ready to help you accomplish your chores in comfort from a spacious, all-weather cab.



L3901

DO MORE: Kubota's Standard L Series is available in 2WD or 4WD and delivers both performance and quality. Engine, transmission and all integral components are manufactured by Kubota. Features a comfortable, ergonomic seat and intuitive operator controls.



M6

BE POWERFUL: An unbeatable combination of performance and maneuverability with Kubota diesel engines up to 141.4 HP* and a 24F/24R Intelli-Shift transmission. The M6 offers greater comfort and visibility with an extra-spacious Grand X Cab.



1724

MAKE THE CUT: Depend on the 2700 commercial grade zero-turn mower for durability and all-around performance with 48, 54 or 60-inch decks.

EDGELLER AND HARPER FARM EQUIPMENT

WEST PLAINS

4973 West US Hwy 160
West Plains, Missouri • 417-256-0420

MOUNTAIN GROVE

8665 Outer Rd
Mountain Grove, Missouri • 417-855-7060



www.kubota.com

*For complete warranty, safety and product information, consult your local Kubota dealer and the product operator's manual. Power (HP/KW) and other specifications are based on various standards or recommended practices. Optional equipment may be shown.
© Kubota Tractor Corporation, 2016



SUTER

**Fencing & Welding LLC
Metal Building Construction**



**Welding • Fencing • Corrals
Metal Buildings**

Servicing the Tri-County Area
"For All Your Fencing Needs"

Cole Suter • 417-349-0580

SUTER LIQUID FEED & FERTILIZER

Cole Suter...417-349-0580

Pro-Energy Feeds
INC.



This feed contains
everything your cattle
needs: Protein, energy,
probiotics, and AQUA-
ZYME PLUS enzyme
enhancements

Pasture Gainer. Dairy Blend Initiator. Calf Booster.

Double S liquid feed series offers molasses-based free-choice lick tank products that will bring convenience and cost savings to your operation. These products are specifically formulated to provide beef cows and stocker calves with luminal degradable protein and readily fermentable sugars that when combined will help boost your animals to the next level.



DOUBLE S
LIQUID FEED SERVICES, INC.

NEW ITEMS ... MOST 50% TO 70% OFF!!

**Clothes. Home decor. Exercise equipment. Toys.
Seasonal gifts. Furniture. Shoes. Baby items.**

**Overstock items from Target,
Amazon and many other big stores.**



TLC



MARKETPLACE
417.989.9414

5566 US 160. Theodosia, MO



GLADE TOP TRAIL

Missouri
Scenic Byway

Khristie Tate, who lives nearby, snapped this panoramic photo from an overlook on Glade Top Trail.

Considered one of the most scenic locations in Missouri, the Glade Top Trail cuts through the Mark Twain National Forest and borders the Hercules Glade Wilderness Area, following narrow ridgetops rising 500 feet above the surrounding rolling countryside.

OWNER: Mark Twain National Forest, US Forest Service

LENGTH: 23 miles

CONTACT: Ava/Cassville/Willow Springs District Ranger
Cody Lunsford, 417-683-4428

GPS COORDINATES: Latitude: 36.75° N, Longitude: 92.76° W

OPEN: Year round; quiet hours from 10 p.m. to 6 a.m.

MAP: www.fs.fed.us/wildflowers/regions/eastern/GladeTopTrail

Points of interest. Notable areas include Hayden Bald, which has a picnic table and parking area, and Smoke Tree scenic overlook, a pull-off with a bench for sitting and taking in the view. The Corbitt Potter and Willie Lee areas are good for “dispersed camping” (meaning camping outside of a designated campground, which is allowed along the trail). The Arkansas View site has a picnic table and spectacular views south. Watershed Divide offers views of a vast area of countryside. Wolf Junction has a picnic table, and Big Creek Basin offers an impressive view. Close to the Glade Top Trail on the southwest side, trails are available for hikers, equestrians and dispersed campers. A vault toilet is located at the Hercules Tower trailhead.

Scenic byway. Overlooks.

The Glade Top Trail is a Missouri National Forest Scenic Byway. Its wide, sweeping views of the Ozarks countryside are beautiful anytime of year, but they’re especially breathtaking in the fall, when the hardwoods transform from their usual green blanket into a tapestry of vibrant autumn color. The all-weather road is accessible to all vehicles and is maintained regularly.

Seven overlook pull-off locations provide visitors with panoramic views of the Ozarks that reach 20 miles northwest to the Springfield Plateau and 40 miles south to the Boston Mountains in Arkansas.

Flaming Fall Revue.

Each year the Ava Chamber of Commerce sponsors an outdoor fall festival, the Flaming Fall Revue, at the Caney Picnic Area on the Glade Top Trail. The event, typically held the second or third Saturday in October, begins with an outdoor church service at 10:30 a.m. followed by live music, fall activities, pumpkin painting, exhibits and local artists, a dessert auction and various dinner options for purchase. For more information, contact the Ava Chamber of Commerce at 417-683-4594 or visit www.avachamber.org.



Glade Top Trail blanketed in fall foliage. The scenic byway is known throughout the region for its sweeping views.



Bachman sparrow and Eastern Collared Lizard

Wildflowers.

Native to these glades is a high diversity of both common and rare plants. Some of the wildflowers that can be seen along the Glade Top Trail include Arkansas calamint (*satureja arkansana*), aromatic aster (*symphotrichum oblongifolium*), Barbara's buttons (*marshallia caespitosa* var. *signata*), Bush's skullcap (*ccutellaria bushii*), Gattinger's goldenrod (*solidago gattingeri*), Missouri black-eyed Susan (*rudbeckia missouriensis*), Missouri evening primrose (*oenothera missouriensis*), purple beardtongue (*penstemon cobaea* var. *purpureus*), purple coneflower (*echinacea purpurea*), rosinweed (*grindelia lanceolata*), stenosisphon (*stenosisphin linifolius*), silky aster (*symphotrichum sericeum*), Spanish needles (*palafoxia callosa*), Trelease's larkspur (*delphinium treleasei*) and yellow coneflower (*echinacea paradoxa*).



**Missouri
Black-Eyed Susan**

Unique landscape.

Missouri has some of the greatest abundance and diversity of glades in the United States, and Glade Top Trail lies within the heart of the best remaining examples of this unique natural landscape. Also known as barrens, balds or knobs, glades consist of areas of thin soil with relatively large amounts of exposed bedrock, and they're dominated by herbaceous vegetation. The glades provide habitat for some species not generally found in the Ozarks, including the Bachman sparrow, a state endangered species. If you're lucky, you might see the colorful eastern collared lizard, pictured left.

Directions

From Gainesville, travel north on Highway 5 about 25 miles. Turn left on Highway A in Douglas County. (Note: Ozark County has an A Highway just south of Wasola; don't turn there.) Go 3.6 miles and turn left on County Road 409, where you'll see a Glade Top Trail sign. The trail's south end can also be accessed at Longrun, off Highway 95 in Ozark County. From the west, access the trail from Highway 125, 2 miles south of the Hercules Glade Wilderness.

Guy R. Resch DDS



417.273.5100

General Dentistry
Reconstruction • Cosmetic • Implant

Crowns • Fillings • Extractions
Advanced Laser Surgery
CT Scans • Implants
Bone & Sinus Grafting
Dentures & Partial
Diagnostics • Root Canals
Full Mouth Reconstruction

www.guyreschdds.com



*Open 8 a.m.-5 p.m.
Wednesday, Thursday & Friday
Closed noon to 1 p.m. for lunch*

8965 Hwy. 160 • Isabella, Missouri

Some Insurances accepted

**Oil Changes • Tires • Computer Diagnostics
Alignments • Light Mechanic Work • Etc.**



We carry Interstate Batteries

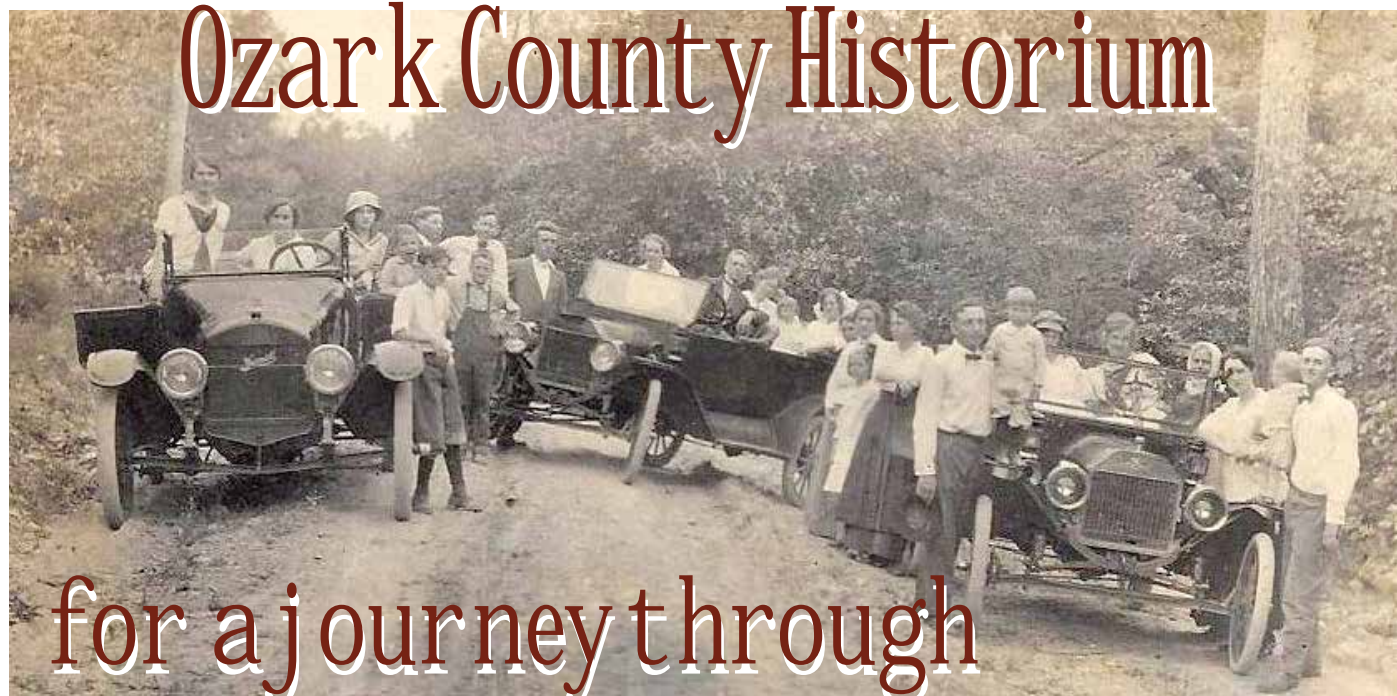


Lincoln Grisham, owner
5484 US Highway 160
Theodosia, MO 65761



On your next exciting road trip head to the

Ozark County Historium



for a journey through our area's past.

Join us for appealing history-focused events, regular quilting and craft sessions or to dig into your family's history in our genealogy library. Follow us in the *Ozark County Times* or on the Ozark County Historium Facebook page. Visit our website to order historical books or peruse our collection of nostalgic photographs. Whether you're an Ozark Countian by birth or adoption, or if you have a long-distance affection for the Real Ozarks, we look forward to seeing you!

Ozark County Historium

Part emporium, part museum, all about Ozark County history

Home of the Ozark County Genealogical and Historical Society

Open weekdays 10 a.m. to 2 p.m. • P.O. Box 4, Gainesville, MO 65655

On the west side of the Gainesville square

417-679-2400 • ozarkco1@ozarkcountyhistory.org • ozarkcountyhistory.org



Dora resident Lindsay Collins Sellars shared this photo with the *Times* of the picnic area at Noblett Lake.

<p>Custom Homes & Buildings Metal Buildings Pole Barns Roofing Garages FREE Estimates</p>	 <p>Winrod Brothers CONSTRUCTION LLC</p>	<p>Jonathan Winrod Nathanael Winrod 417-284-3533 Tecumseh, MO Arkansas Licensed Residential & Commercial</p>
 		 
<p> www.WinrodBrothersConstruction.com  Find us on Facebook staff@winrodbrothersconstruction.com </p>		

NOBLETT LAKE

Recreation
Area

Originally constructed by the Civilian Conservation Corps, this scenic recreation area on the shore of a 26-acre lake offers picnicking, fishing, birdwatching, canoeing and electric motor boating.



OWNER: Mark Twain National Forest, US Forest Service
CONTACT: Ava/Cassville/Willow Springs Ranger District,
 1103 South Jefferson, Ava • 417-683-4428
HOURS OPEN: 6 a.m. to 10 p.m.
FEES: No day use fee. Group picnic pavilion \$25/day.
GPS COORDINATES: Latitude: 36.90 Longitude : -92.09

Camp. Dispersed primitive camping is allowed in loops below the dam and on the hill across from the Noblett trailhead, known locally as "Sugar Hill." Camping is not allowed in the day use area.

Canoeing and fishing.

Noblett Lake is a popular place to canoe and fish for blue gill, sunfish, bass and catfish. Only electric motors are allowed on the water.

Picnic/pavillion

Picnic tables and grills are available on a first come, first serve basis. Vault toilets are available, but there is no drinking water on site. The pavilion, pictured at left, can be reserved for \$25 per day at the website recreation.gov. If not reserved, it can be used on a "first-come, first-serve" basis. Reservations may be made at least four days and up to 12 months in advance. Groups of more than 75 people, whether or not they're using the pavilion, must obtain a special permit. Call 1-877-444-6777 or visit recreation.gov to book.

Ridge Runner trail.

This National Recreation Trail offers backpackers, mountain bikers and equestrians a 36.5-mile route that begins with a 6-mile loop at Noblett Lake and continues south for 21 miles, where it meets a 6-mile loop at the North Fork Recreation Area (see page 49). Horses are not allowed in the day use areas at Noblett Lake or North Fork Recreation Area or near Blue Spring in the North Fork Recreation Area.



Riding horses.

The Ridge Runner Trail is popular among equestrians who are seeking an all-day ride. A 6-mile loop serves those seeking a shorter ride. Limited trailer space at the trailheads makes it difficult for more than a few riders to use the trail at any given time. Parking is especially limited on spring and fall weekends. Horses are not allowed in the dispersed camping area below the dam, around the lake or in the picnic area.

Lake loop.

The Loop Trail around Noblett Lake on the north end of the Ridge Runner Trail is a good option for day hikers. If vehicle shuttling is an option, the main trunk of the Ridge Runner Trail (see above) also provides point-to-point day hike options.

Directions

From Dora in northern Ozark County, travel north on Highway 181 for 20 miles. Turn right onto State Highway AP and continue about 3 miles. Turn right onto Forest Road 857 and continue for about 1 mile to the turnoff for the day use area. The road continues to the Noblett dam and trailhead.

Whiddon's

AIR & ELECTRICAL, LLC



Perry Whiddon • Mechanical contractor
Licensed & Insured

Over 30 years experience • Residential and commercial

We cover a 5 county service area with 2 locations to serve you, Ava and Houston. Call today, and let our exceptional team take care of your needs.

Our services include:

- Heating & Air Conditioning
 - Electrical
- Light plumbing repairs
 - Gas Piping
 - Water heaters
- Farm Equipment Air Conditioning
 - Sheet Metal Work



*Your local Rheem Dealer.
"Relax, it's Rheem."*

Ava • 417-543-2657

1011 North Jefferson • Ava

Houston • 417-967-2422

712 S. First St. • Houston

Pointer Blackburn & Brown

PROFESSIONAL, EXPERIENCED REPRESENTATION

DAVID B. POINTER

JESSICA P. BLACKBURN • JOSHUA D. BROWN

Attorneys at Law

**Civil Litigation • Real Estate • Probate
Estate Planning • Business Transactions
Criminal Defense • Family Law**



496 Third Street
Gainesville, MO
417-679-2203

307 NW 12th Ave.
Ava, MO
417-686-3400

109 E. Second St.
Mtn. Grove, MO
417-926-2370

**Visit our website
www.pointerlaw.com**

MLH & SONS

Sand & Gravel



SPECIALIZING IN

**Topsoil • Fill Dirt • Creek Rock • Sand • Chat • Ponds
Excavating • Site Prep • All Limestone Products**

Ballpark Road • Gainesville, MO



417-679-4102

Not your everyday representative

An outdoorsman who loves all the Ozarks has to offer



MY PRIORITIES

- Expanding high speed broadband so people can work from home
- Supporting small business
- Supporting local fire departments
- Supporting law enforcement

I like to be involved in our communities.
Tell me about your community events
and I will try to be there.

***Let my office be your point of
reference for questions, concerns
or governmental help on any level.***



Missouri House of Representatives State Representative Travis Smith

State Capitol • Room 110-A • 201 W. Capitol Ave. • Jefferson City, MO 65101
Travis.Smith@house.mo.gov • 573-751-2042

Paid for by Travis Smith

NORTH FORK

Recreation
Area



North Fork Recreation Area provides camping, picnicking, boating, canoeing, hiking and fishing access on the beautiful North Fork of the White River, which has a total of nine major springs flowing into it.

Canoe/kayak.

The North Fork Recreation Area is more commonly known by locals as Hammond access, especially in reference to the public canoe and kayak access ramp. Small jon boats can be launched here; however, motorized boats are prohibited. This is one of three public access points on the North Fork of the White River. While this access is managed by the U.S. Forest Service, the other two, at Blair Bridge and Patrick Bridge, are managed by the Missouri Department of Conservation. Private access points are offered by local outfitters Twin Bridges, River of Life Farm, Pettit's Canoe Rental, Sunburst Ranch and Dawt Mill Resort.

Picnic
and swim.

Ten sites with grills and picnic tables are available for day-use picnicking. The area also offers vault toilets, drinking water and centralized garbage collection. This area is used for swimming, tubing and wading during the summer months. There is no life-guard, and using the water access is done at one's own risk. A \$2 per vehicle day use fee is charged for those visiting.

Directions

From Gainesville, take Highway 181 northeast to CC Highway just south of Dora. Turn right and travel east for 3 miles.



OWNER: Mark Twain National Forest, US Forest Service
CONTACT: Ava/Cassville/Willow Springs Ranger Station, 417-683-4428
GPS COORDINATES: Latitude: 36.7547818, Longitude : -92.1548502
FEES: Day use fee is \$2 per vehicle, \$10 per bus
HOURS OPEN: 6 a.m. to 10 p.m.
OPERATIONAL DATES: Gates are open May 15 - Nov. 30, and closed Dec. 1 - March 1. Walk-in traffic and day use is permitted when gate is closed, but no camping.

*A farm can't make money
unless it grows.*

*But it can't grow unless it
has money.*

At **Town & Country Bank**, we understand the needs of our agricultural-based communities. Our local lenders are here for you and specialize in the following:

- Farm Purchase & Refinance
- FSA Guaranteed Farm Loans
- Livestock & Equipment Loans
- Revolving Lines of Credit



Mtn. Grove
910 N Main St. | 417.926.3700
Ava
1106 Springfield Rd | 417.683.4147



**Town &
Country Bank**

Smart. Friendly. **Solutions.**

Member FDIC 



The trail to Blue Spring - Day hikers can enjoy a .6 mile walk on the Blue Spring Trail from the North Fork Recreation Area campground to Blue Spring, a vibrant, oval-shaped spring about 30 feet in diameter. The spring averages 7 million gallons per day of cold, clear-blue water. The colorful pool is tucked into a dramatic setting: On three sides, a stone wall made of cherty gasconade dolomite rock surrounds the spring and represents the karst topography of the Ozarks. Photo by Jessi Dreckman.

Devil's Backbone Trail.



The North Fork Recreation Area at Blue Spring serves as a gateway into the Devil's Backbone Wilderness, a 6,687-acre area of wild, public land that takes its name from a long, narrow ridge known to the area's early settlers as the Devil's Backbone. At 1,020 feet, the highest "vertebrae" of the ridge trail glides through the center of the wilderness. The trail is rated as moderately difficult with sometimes steep terrain. Thirteen miles of maintained foot and horse trails follow the Devil's Backbone and four other ridges, dropping off into surrounding hollows in a forest dominated by oaks, hickories and short-leaf pines. Although equestrians are allowed on the trail, they are not allowed near Blue Spring or in the day use area of the North Fork Recreation Area. Alternatively, horseback riders can access the Raccoon Hollow Trailhead from the south side of CC Highway about 1.5 miles east of Dora.

Ridge Runner Trail.

This National Recreation Trail provides backpackers, mountain bikers and equestrians with a 36.5-mile route that begins with a 6-mile loop at the North Fork Recreation Area and continues north for 21 miles, where it meets a 6-mile loop at Noblett Lake. The landscape varies from gently rolling to very steep terrain with rock outcrops and buffs. Vegetation along the trail is diverse and includes oak-hickory, shortleaf pine and bottomland forests. Remnant prairie plants can be seen, a reminder of a time when repeated wildfires burned the Ozarks, allowing fingers of prairie to extend into the woods. Horses are not allowed in the day use area at North Fork Recreation Area, near Blue Spring or in the day use area at Noblett Lake. The Ridge Runner Trail can also be accessed at the Hay Hollow Trailhead on Forest Road 759, off Highway 14 east of Twin Bridges. The trail passes through the creek bottom approximately .4 miles south of Braddock Lake. Primitive camping is available at this trailhead.



Camp.

The North Fork Recreation Area offers 20 campsites, each with a picnic table, fire ring, post for a hanging lamp and a tent pad. Drinking water (available May 15 - Oct. 15), vault toilets and garbage receptacles are centrally located. No water or sewer hook-ups for camping trailers are available at this location. Campground nightly fees of \$10 for non-electric sites and \$15 for electric sites. The use of generators is not prohibited, but quiet hours are from 10 p.m. to 6 a.m.

Mon-Sat 7am to 7pm
789 Worley Cr.
West Plains, MO
417-256-3749

HIRSCH

FEED & FARM
SUPPLY INC.

Mon-Sat 7:30 am to 5:30 pm
Old Hwy. 63 S.
Thayer, MO
417-264-7616



WOMEN'S

MEN'S



MASSEY FERGUSON



KRONE

Q-CATCH



Proud to be a locally owned independent business



**EQUIPMENT RENTAL AVAILABLE AT
OUR WEST PLAINS LOCATION**

FLEXIBLE RENTALS: RENT FOR A DAY, A WEEKEND, A WEEK, OR MORE

Call to reserve:
(417) 256-3749

AVAILABLE TODAY:

SKID STEERS
WALK-BEHIND TRENCHERS
SCISSOR LIFTS
WELDERS
CONCRETE SAWS
POLE SAWS
SPECIALTY EQUIPMENT
...AND MORE



131 Lost Woods Drive • Theodosia, MO 65761 • 417-273-4877
www.lostwoodsgolfcourse.com

LOST WOODS HIDEAWAY HOURS:

Restaurant

Tuesday 4-7 p.m.

Friday 11 a.m.-8 p.m.

Saturday 11 a.m. - 7 p.m.

Sunday 11 a.m. - 3 p.m.

Pub

Tuesday 2-10 p.m.

Thursday 2-5 p.m.

Friday 2-10 p.m.

Saturday 3-8 p.m.

Sunday 11 a.m.-5 p.m.

Clubhouse

Tuesday, Thursday, Friday
open 10 a.m.

Saturday and Sunday
open 9 a.m.



Owners, pictured left to right: Tom and Christene Reinbold, Sharon and Greg Nagel, Brandi and Matt Shockey, Nancy and Bill Rauch, Debi and Bill Agee

LOST WOODS HIDEAWAY FEATURES:

9-hole golf course • 18-hole disc golf course

• restaurant and pub • banquet facility

NEW: 4 pickleball courts • 2 bocce ball courts

• corn hole • sand volleyball

• children's play area • ping pong

Golf Course open year round, sunrise to sunset

WE LOOK FORWARD TO SEEING YOU SOON AT LOST WOODS HIDEAWAY

SUBSCRIBE TODAY!

Ozark County and adjoining
Missouri counties
(Howell, Taney, Douglas)

1 year.....	\$35
6 months	\$25
3 months	\$20
Senior citizen, 1 year.....	\$32

Missouri

1 year.....	\$42
6 months	\$28.70
3 months	\$20.15

Outside Missouri

1 year.....	\$50
6 months	\$35
3 months	\$30

**Call 417-679-4641 or email regina@ozarkcountytimes.com
OR MAIL IN THE FORM BELOW**

OZARK COUNTY Times

PO Box 188, Gainesville, MO 65655
417-679-4641
www.ozarkcountytimes.com
SUBSCRIPTION FORM



The cover of the 2021 edition of Times Past magazine features a photo of a young Jerry Lyons sitting on the old Highway 6 bridge over Barren Fork.
Times Past
magazine is
now available

"Whether we proudly count our family's generation here or merely adopted them, we Crick Christians love our country's history."



Photo courtesy: House of Hope

In June, a few Sundays before Doyle Turner stepped down as pastor of True Hope Church in Theodosia after more than 30 years, the congregation celebrated his time there with a potluck dinner and retirement party (although Doyle isn't calling it retirement). Above: Kay Stochon, left, and Donna Jennings present the Turners with a plaque thanking them for their years at the church. The plaque said, in part, "We thank God for giving us a Pastor just like you." Right: Doyle Turner and his wife, Peggy, were treated to a decorated cake in their honor.

HALF CENTURY

OZARK COUNTY Times

Name _____
Address _____
City _____
State _____ Zip _____
Phone _____
3 month 6 month year Total _____

E-edition still available at \$20 a year and FREE with print subscription

HERCULES GLADE Wilderness

This 12,413-acre wilderness encompasses some of the most scenic and unique country in the Midwest. Its varied landscapes offer unusual beauty and a measure of solitude within easy reach of those who love the outdoors.



OWNER: Mark Twain National Forest, US Forest Service
ACERAGE: 12,413 acres
CONTACT: Ava/Cassville/Willow Springs District Ranger
Cody Lunsford, 417-683-4428
GPS COORDINATES: Latitude: 36.68, Longitude : -92.88
OPEN: Year round, quiet hours from 10 p.m. to 6 a.m.
WEB: www.fs.usda.gov/detail/mtnf/recreation/?cid=stelprdb512313

Trailheads.

Three trailheads provide entry to the Hercules Glades Wilderness. The Hercules Tower Trailhead is located along Highway 125, 7 miles north of Highway 160 in Taney County. It has a vault toilet, space for camping and parking. The Blair Ridge Trailhead is also off Highway 125. Turn onto Forest Road 155 and go approximately 2 miles. Only parking is available at this location. The Coy Bald Trailhead, farthest from Ozark County, is off Highway 160, 9 miles east of Forsyth. Turn north onto Forest Road 566 and go approximately 4 miles. Only parking is available at this location.

Scenic.

Described as some of the "most scenic and unique country in the Midwest" by the U.S. Forest Service, the Hercules Glade Wilderness Area features more than 12,000 acres of open grassland, forested knobs, steep rocky hillsides, narrow drainages, limestone rock outcroppings and open glades.

Camp.

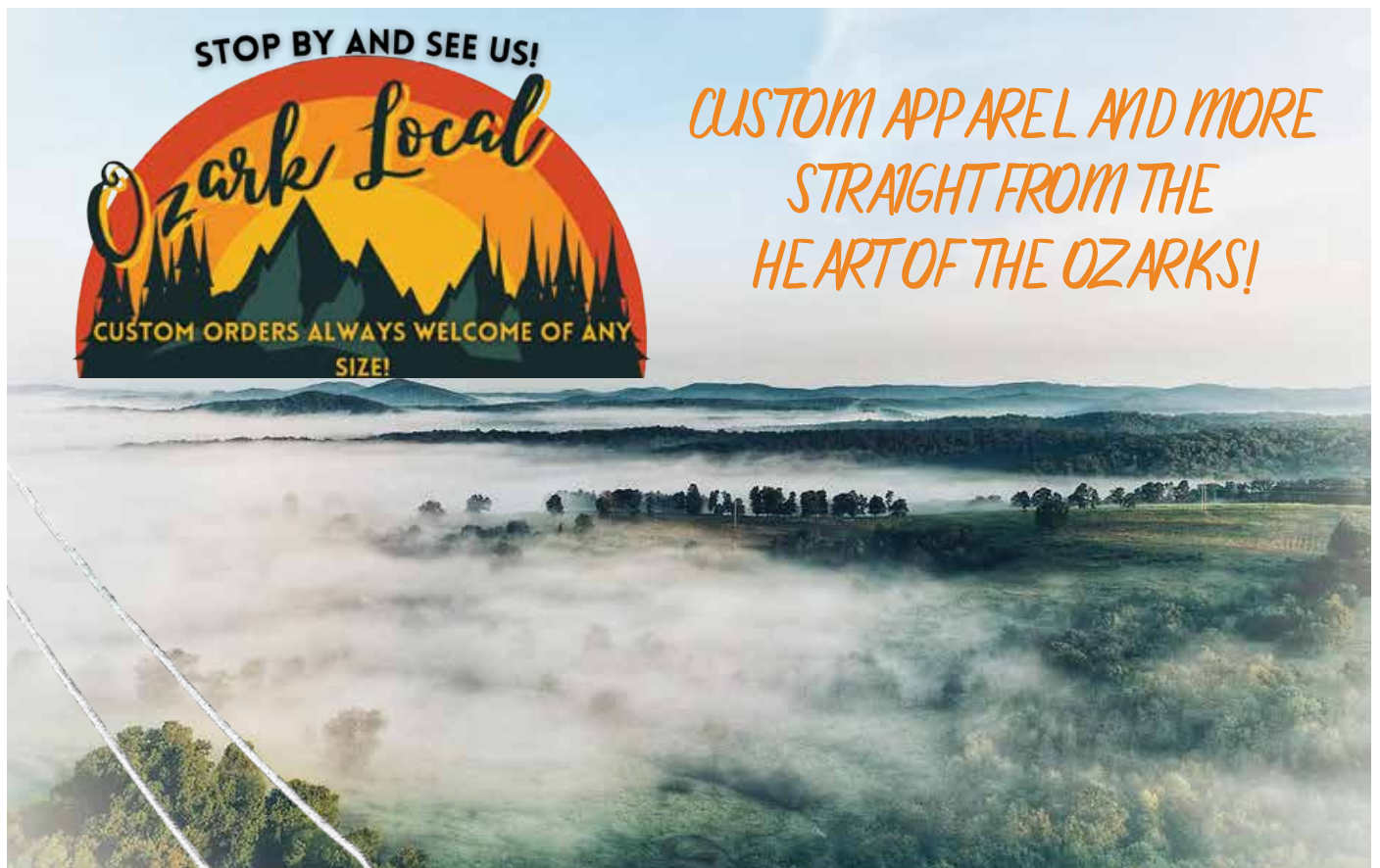
"Dispersed camping" is allowed in the Hercules Glade Wilderness Area. According to the Mark Twain National Forest Hercules Glade website, "dispersed camping" indicates free camping anywhere in the national forest outside of a designated campground. It also means there are no toilets, no structures, no trash cans, no treated water and no fire grates.

Hiking.

Hercules Glade features 32 miles of maintained trails to explore by foot or on horseback. The National Forest Service rates the terrain as "more difficult to most difficult." It features steep areas, stream crossings, sparse trail markings and elevations ranging from 600 to 1,200 feet. Due to these conditions, the wilderness area receives only light use. Cross-country hiking is allowed, but those hikers should bring a map and compass or a GPS unit.

Directions

From Gainesville, head west on Highway 160. Continue about 29 miles to Rueter, then turn right (north) onto Highway 125. Travel about 7 miles and turn left onto the fire tower road to reach the Hercules Tower Trailhead.



From our clothing designs to our custom furniture, floral arrangements, countertops and shelving, we strive to bring the Ozarks to you.



Www.Ozark-local.com • Bestdayever4602@gmail.com

Facebook: Ozark Local

5566 US 160 • Suite A • Theodosia • 870-501-3333

Where we work to live, but do not live to work.



MACPHERSON LAW CENTER L.L.C.

MACPHERSONLAWCENTER.COM

INJURED OR ACCUSED? WE CAN HELP

YOUR CASE, OUR PRIORITY.

We are a small, selectively focused personal injury and criminal defense firm by choice. This lets us get to know our clients and cases on a deep, personal level so we can best formulate a “game plan” that focuses on the goals of our clients and their families.



**FOR LOCAL
DEDICATED LEGAL
REPRESENTATION
WITH REAL
TRIAL EXPERIENCE**

Jason MacPherson

421 E. State St.
Suite B, Mountain Grove
417-926-0199

The choice of a lawyer is an important decision and should not be based solely upon advertisements.

Small flower shop.

Fresh bouquets. Silk arrangements.
Wreaths. Wedding arrangements.
Casket Sprays.
Funeral arrangements.
Plants. Candy Bouquets.
Oils and more.

Free delivery inside Gainesville city limits and cemeteries
Delivery fee added to deliveries outside city limits

Pandora's
Petals

NOW LOCATED ON THE
GAINESVILLE SQUARE!

417-989-0678

26 Court Square
Open 9 a.m.-5 p.m. Monday-Friday

RAJ Construction

"We do the job right the first time."

**New Construction
Remodeling • Tile
Hardwood, Laminate
or Linoleum Flooring
Plumbing • Electrical
Sheetrock Repair
Wall & Ceiling Texture
Painting
Interior & Exterior Trim
Finish Work
Windows • Doors**

Roger Jeckstadt - Owner/Contractor

190 Jeckstadt Drive
Gainesville, Missouri 65655

E-mail: rjeckstadtcarpentry@yahoo.com

Cell: (417) 255-4279

Hospice
of the Ozarks



Where care, compassion, and comfort come together



96% of our patients are in the
comfort of wherever they call home

811 Burnett Drive | Mountain Home, AR | 72653

870-508-1771 | 800-711-9596

www.hospiceoftheozarks.org

Affiliated with Baxter Health

Follow us on:



Serving Baxter & Marion counties in Arkansas





PIGEON CREEK

Trails
and Park

A grove of cypress trees off the side of the roadway near the lake access makes an interesting place to visit and is an interesting backdrop for family photos.

The Pigeon Creek public access on Norfork Lake is a great area to visit for a wide variety of activities. Fun can be had by lake-goers launching boats, fishing, hiking, bicycling and enjoying the unique cypress grove.

Corps run. The Pigeon Creek National Recreation Trail is owned by the U.S. Army Corps of Engineers and is maintained through a volunteer program operated by the Twin Lakes Bicycle Club. The trail system can be accessed from Arkansas Highway 201 (a continuation of Missouri J Highway) just south of the Missouri/Arkansas line at Pigeon Creek Park on Lake Norfork.

Fishing. Anglers can often be found lining the banks of Norfork Lake, and fisherman with boats use the boat ramp heavily throughout the year. Those fishing here must have an Arkansas fishing license or a Missouri fishing license with a Border Lakes tag.

Boat/Swim The park includes a public boat-launch ramp and parking lot for visitors. The lake in this area is enjoyed by swimmers during the summer months. There is no lifeguard, and using the water access is done at one's own risk.

Multi-use Trails. The Pigeon Creek "stacked loop" trail system consists of more than 20 miles of bicycling and hiking trails along the shores of Lake Norfork. The trail system is a favorite with off-road bicyclists and draws a large crowd from all over the Midwest. No horses or motorized vehicles are allowed on the trails. The trailhead is on the west (right) side of Highway 201, opposite the boat ramp side, when coming from Missouri. There is a small parking lot allowing hikers or bikers access to leave their vehicles.



Directions From Gainesville, take Highway 160 east to J Highway. Turn right (south) and continue into Arkansas, where the road becomes Arkansas 201. Pigeon Creek Park is approximately 6 miles south of the state line on Lake Norfork.



BRYANT CREEK State Park

Two hiking trails provide guests with the option of a short half-mile or a longer 4.5-mile hike. Photo courtesy of Missouri State Parks.

Located near Rockbridge, Bryant Creek State Park is home to impressively large oaks and shortleaf pines spanning rugged, steeply dissected river hills that front the stream for which it's named. With over 2,900 acres, the park features many natural attributes including 2 miles of Bryant Creek frontage.

OWNER: Missouri State Parks
ACERAGE: 2,917 acres
CONTACT: Park office, 417-334-4704
GPS COORDINATES: 36°49'07"N 92°25'20"W
OPEN: Sunrise to sunset, year-round
WEB: <https://mostateparks.com/park/bryant-creek-state-park>

Unique.

Four tributary hollows go through uncut forest and sandstone outcrops, providing lots of character and scenic views. The park's remote location, bountiful flora and fauna, and pristine creek make it a great place to experience the wonders of the Ozarks.

Trails.

Two hiking trails wind through the northern end of park, the 4.5 mile Pike Hollow Trail and the more accessible .6-mile Pinewoods Trail, allowing users to see Missouri's only species of native pine, and picnic tables provide visitors a place to relax and take in their surroundings.

This view of Bryant Creek is viewable from the Pike Hollow Trail trail at Bryant Creek State Park. Photo by Jan VanSchuyver, Gentryville.





**GHCC 2023 Valentine's Day
Queen, Versal Terry, and
King, Jimmy Simpson**

**Visit us on Facebook at
Gainesville Healthcare Center.**

- ♥ Private Suites Available ♥
- ♥ Post Hospital Recovery ♥
- ♥ Full Service Therapy Department ♥
- ♥ Private Rehabilitation Wing ♥
- ♥ Transportation Available - Monday thru Friday ♥
- ♥ Lively, Fun Activity Program ♥
- ♥ Restaurant-style Dining ♥
- ♥ Beautiful Park ♥
- ♥ Respite and Hospice Care ♥



**GAINESVILLE
HEALTH CARE CENTER**
(417) 679-4921
Hwy. 160 West • Gainesville, MO

LET US HELP YOU DESIGN YOUR DREAM KITCHEN



"Custom Crafted to Last a Lifetime"



**Traditional Oak • Classy Cherry
Rustic Hickory • Knotty Pine
Painted Cabinets**



**Specializing in residential
kitchens, bath cabinets,
counter tops and custom
commercial case work.**



Free Consultation and Estimates
Tim Corbin, Owner • Tecumseh, MO

417-284-3439

www.tecumsehcabinet.com

HIKING

Trails

Hike the trails or get off the beaten path! Most public areas also allow hikers to explore areas off designated trails and paths. It's wise to bring a map if hiking off-trail.

SPOUT SPRING NATURE TRAIL

Caney Mountain Conservation Area, See page 36

Distance and configuration: 3-mile out-and-back trail

Facilities: Restrooms, parking, camping and picnic areas

Description: This easy trail traverses 1.5 miles of the shady depths of Caney Creek Valley in the Caney Mountain Conservation Area's interior. The trail follows Caney Creek most of the way, providing beautiful scenery along the gently rolling hills. There are a few shallow-water crossings along the way, and a picnic table just a short way from the trailhead provides a nice spot for a packed lunch.

Directions: From Gainesville, travel north on Highway 181 to Caney Mountain Conservation Area Headquarters Road, on the left. When you get to the headquarters area, bear right to stay on the Main Trail. The trailhead is 1.5 miles ahead on the right.

PIGEON CREEK TRAIL SYSTEM

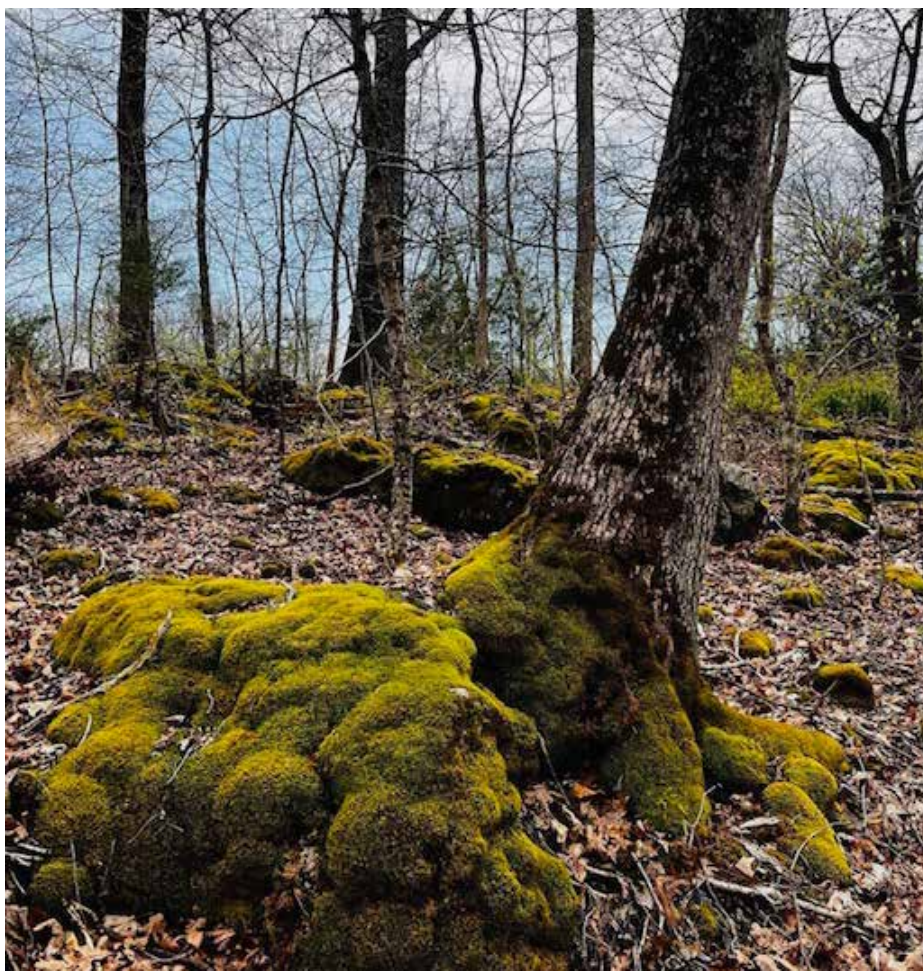
Pigeon Creek Park, see page 57

Distance and configuration: Multiple trails ranging from .5 to 1.5 miles can be joined together for a 20-mile stacked loop

Facilities: Restrooms, parking and picnic areas

Map: www.norfork.com/cycling/trails

Description: The Pigeon Creek Trail System, one of the premier cycling and hiking systems in the Ozarks, is located on the banks of Lake Norfork at Pigeon Creek Park in Arkansas. A stacked loop system provides a wide variety of different trail-length options, which can be linked to-



Trails in the area offer guests wide sweeping views, hardwood and pine forests, moss covered rocks, pristine streams and more. Photo submitted by Samantha James.

gether for up to 20 miles. The trails vary in difficulty with an elevation difference of 250 feet maximum.

Directions: From Gainesville, head east on Highway 160 for 5 miles. Turn right (south) onto J Highway and continue into Arkansas, where J Highway becomes Arkansas Highway 201. Continue for 8 miles to Pigeon Creek Park just before crossing the Lake Norfork bridge. The trailhead access is on the right (west) side of the highway, and the recreation area is on the left (east) side.

BLUE SPRING TRAIL

North Fork Recreation Area, see page 48

Distance and configuration: 1-mile out-and-back hike

Facilities: Restrooms, camping, parking, picnic areas and water during warmer months

Description: This very short walk takes you from the campground at the North

Fork Recreation Area to the turquoise, ice-cold waters of Blue Spring. The trail parallels the North Fork of the White River and, after the spring, continues on into the Devil's Backbone Wilderness area. Among the trees, cardinals, woodpeckers and other birds glide from tree to tree. Flowering dogwood and redbud trees catch springtime sunshine in the awaking forest and display brilliant colors. Averaging 7 million gallons of cold, clear water each day, Blue Spring creates a deep, oval-shaped pool about 30 feet in diameter that's surrounded on three sides by a stone wall of cherty Gasconade dolomite. Horses and motorized vehicles are prohibited from this area of the National Forest.

Directions: From Gainesville, take Highway 181 to CC Highway just south of Dora; turn right on CC and travel 3 miles.

Continued to page 62



Get Your NATURE BOOST

Interested in exploring the outdoors, but unsure where to start? It's as easy as stepping out your door! Join host **Jill Pritchard** from the Missouri Department of Conservation as she explores everything nature has to offer — from health benefits and wildlife viewing, to outdoor recreation and unbelievable conservation stories. Subscribe and get your own Nature Boost!



Download the podcast at
mdc.mo.gov/natureboost



25 ROC # 331473 **YEARS EXPERIENCE**

We build conventional built homes with a high attention to detail.

Licensed • Bonded • Insured

General Contractor • New Construction • Remodels • Additions



Legacy Mountain Builders

Sustainably Built For Generations

We specialize in sustainable green building techniques and have a high standard when it comes to building your home.



928-955-9500



HIKING

Trails

The sky is often ablaze with color in the morning and again at dusk. Photo submitted by Logan Smith, Wasola.

DEVIL'S BACKBONE LOOP

North Fork Recreation Area, page 48

Distance and configuration: 10-mile or 13-mile balloon loop options; a 4-mile out-and-back option makes for a good day trip

Facilities: Restrooms, camping, parking, picnic areas and water during warmer months

Map: www.ozarktrail.com/northfork.php

Description: The Devil's Backbone Wilderness includes 13 miles of moderately difficult trails within the area accessible from Blue Spring Trailhead, including a 10-mile loop or a 13-mile loop option. Accessed from the North Fork Recreation Area, known locally as Hammond access, visitors can follow the half-mile trail to Blue Spring (horses are prohibited in this trailhead and near Blue Spring), then travel along a bluffline and down to the North Fork River around mile 2. This stop provides a nice spot for a picnic and a 4-mile hiking option to return back to the trailhead for those desiring a shorter trek. After the river, hikers can take a left onto a trail to make a 10-mile loop or continue straight for a 13-mile loop. The other three

trailheads – Raccoon Hollow on the south side of CC Highway about 1.5 miles east of Dora; McGarr Ridge Trailhead on the south side of CC Highway about 4 miles east of Dora; and Collins Ridge Trailhead on County Road KK/362 about 16 miles west of West Plains – provide options for point-to-point hikes as well. The terrain is sometimes steep, ranging in elevation from 1,020 to 680 feet, and there are few blazes. Visitors should bring a map and compass and be comfortable route-finding if continuing on past the 4-mile out-and-back hike.

Directions: From Gainesville, take Highway 181 to CC Highway just south of Dora; turn right onto CC east and continue 3 miles.

RIDGE RUNNER TRAIL

North Fork Recreation Area, page 48

Distance and configuration: 22-mile point-to-point

Facilities: Restrooms, camping, parking, picnic areas and water at trailhead during warmer months

Map: www.ozarktrail.com/northfork.php

Description: The Ridge Runner Trail

incorporates parts of two shorter loop routes at Noblett Lake (8 miles) and North Fork Recreation Area (12 miles). The diverse vegetation along the trail includes native wild flowers and remnant prairie species, oak-hickory, shortleaf pine and bottom land forests. The Ridge Runner Trail is rated as moderate and ranges in elevation from 800 to 1,100 feet. The trail is not well defined in some areas and crosses several old logging roads, so visitors should feel comfortable route-finding and should bring a map and compass. Backpackers and hikers should carry plenty of water, as stream accesses are limited to the northern and southern ends of the trail, and water sources can be extremely scarce. The trail is designed and maintained for foot traffic, horse use and mountain bike use. Motorized travel, including on dirt bikes and ATVs, is not permitted.

Directions: From Gainesville, take Highway 181 to CC Highway just south of Dora; turn right on CC east and continue 3 miles.

Continued to page 64



ZXR

ZTR MOWER



0% UP TO **36** MONTHS **OR** **\$150** UP TO
FINANCING* **CASH BACK* (T-L-B)**

KIOTI Residential Grade Zero Turn Mowers Available with 48, 54 or 60 inch Decks



www.lynchequipment.com

3711 N. Hwy. 63 • West Plains, MO • 417-256-1905

KIOTI.com

*Offer available March 1, 2023 – May 31, 2023. Rebates and/or financing based on the purchase of eligible equipment defined in promotional program. Pricing and rebates in US dollars. Additional fees including, but not limited to, taxes, freight, setup and delivery charges may apply. Financing must be through DLL using one of the available financing options. Financing is subject to credit approval. Customers must take delivery prior to the end of the program period. Some customers will not qualify. Some restrictions apply. Offer available on new equipment only. Prior purchases are not eligible. Offer valid only at participating Dealers. Offer subject to change without notice. See your dealer for details. Offer valid only at participating Dealers. Offer subject to change without notice. See your dealer for details. © 2023 Kioti Tractor Company a Division of Daedong-USA, Inc.

HIKING

Trails

NOBLETT LAKE LOOP

Noblett Lake Recreation Area, page 45

Distance and configuration: 8-mile loop

Facilities: Restrooms, camping, parking, picnic areas and water at trailhead during warmer months.

Map: www.ozarktrail.com/northfork.php

Description: An 8-mile loop trail surrounding the 26-acre Noblett Lake provides an appealing opportunity for hikers, equestrians and mountain bikers. This challenging, single-track loop is crisscrossed by a double-track horse trail and crosses Noblett and Spring creeks and Cord Hollow. Trail users sometimes describe deadfall, difficult route-finding and steep, loose hills on the trek. The east half of the loop, by the lake, forms the northern end of the Ridge Runner section of the Ozark Trail, which ends at the North Fork Recreation Area. The frustrations of this trail are usually more than offset by the beauty of the surroundings, the adventure of an unfamiliar and remote experience, and the great view of Noblett Lake from the amazing downhill section near the end of the hike.

Directions: From Gainesville, take Highway 181 north, continuing past Dora to AP Highway in Douglas County. Turn right and follow AP for about 3 miles then turn right onto Forest Road 857 and continue for about 1 mile to the turnoff for the day-use area. The road continues to the Noblett dam and trailhead.

COY BALD LOOP

Hercules Glade Wilderness, page 53

Distance and configuration: 6.8-mile loop linking in with the Hercules Glade system of 32 miles of trails

Facilities: Primitive camping, picnic tables and a pit toilet

Map: www.fs.usda.gov and search for "Hercules Glade"

Description: Coy Bald Trail is a 6.8-mile

lightly trafficked loop trail located within the Hercules Glade Wilderness near Bradleyville. The loop features a waterfall and is rated as moderate. The trail offers a number of activity options and is accessible year-round. Dogs are also permitted on this trail but must be kept on a leash. From this and other trailheads in the Hercules Glade Wilderness Area, 32 miles of maintained trails traverse open glades, forested ridgetops and Long Creek, the primary drainage of the area. Cross-country hiking in other parts of the area is allowed. Key attractions along the trail include Long Creek Falls, panoramic views of the Ozarks countryside and a variety of native landscapes, including open limestone glades and mixed forests.

Directions: From Gainesville, head west on Highway 160 for 39 miles. Turn right (north) onto Cross Timber Road (Forest Road 566), and drive approximately 4 miles to the trailhead.

PIKE HOLLOW TRAIL

Bryant Creek State Park, page 58

Distance and configuration: 4.5 mile loop.

Facilities: Parking lot, picnic tables, pit toilets.

Description: The Pike Hollow Trail is a 4.5-mile "rugged" trail is expected to take four and a half hours to complete. It takes hikers along long ledges of Roubidoux sandstone. The outcrops form intriguing, weather-worn shapes. Bryant Creek State

Park is heavily forested, deeply carved and sharply incised. With 940 kinds of plants, the park preserves more wildflowers, shrubs, trees and other vascular plant species than any area of Missouri yet studied, encompassing within these 3,000 acres nearly one-third of Missouri's total known flora. More species of lichen have been discovered at Bryant Creek than in all but one other Missouri State Park. Nearly 70 kinds of forest, woodland and shrubland birds are known to nest in the park, and many more pass through during spring and fall migrations.

Directions: From Gainesville, travel north on Highway 181 for 7 miles. Turn left onto N Highway in Zanolini, and continue for 12 more miles.

PINWOODS TRAIL

Bryant Creek State Park, page 58

Distance and configuration: .6-mile loop.

Facilities: Parking lot, picnic tables, pit toilets.

Description: Pinwoods Trail leisurely leads visitors through the narrow ridgetop covered in native pine, just to the edge of the rugged drop off to the sandstone geography below. This 0.6-mile trail is a great way to see Missouri's only native Shortleaf Pine.

Directions: From Gainesville, travel north on Highway 181 for 7 miles. Turn left onto N Highway in Zanolini, and continue for 12 more miles.



Bryant Creek State Park has trail maps and area information posted on boards at the park.

Do Your Kids a Favor...

*Make your funeral, cremation
or cemetery plans in advance.*

We're here to help.

Serving the community since 1915



CLINKINGBEARD FUNERAL HOMES, INC.

Clinkingbeard Funeral Home, Gainesville

Manager - Gene Britt, Licensed Funeral Director & Pre-Need Agent

434 Main Street

Gainesville, Missouri 65655

Phone: (417) 679-3315

Clinkingbeard Funeral Home, Ava

407 N. Mansfield Road

Ava, Missouri 65608

Phone: (417) 683-4115

www.clinkingbeardfuneralhome.com



24-Hour Road Service

Farm • Road • Towing

Lock your keys in your car?

Call us!

5 miles east
of Tecumseh

**Repair & Services for
Tractors • Dozers
All Heavy Equipment
ALL AUTO REPAIR**

Check out our 100,000 miles or 1 year warranties
on Transmission rebuilds.

Including: Air Conditioners • Oil Changes • Tires

Small Engine Repair - Lawn Mowers • Weed Eaters • Boat Motors

New & used Parts • Part Locator

Body Shop • Buying Salvaged Vehicles

417-293-1819 • 417-284-7092

FIRSTCALL

FAMILY HEALTHCARE

Patient-centered comprehensive care

Our values NP-CARE:

- N** - Nurse Practitioner led
- P** - Privacy
- C** - Compassion
- A** - Accessibility
- R** - Respect
- E** - Excellence



Marti Warden,
MSN, FNP-BC

98 1st Street • Gainesville • 417-679-3234

Like us on Facebook

Primary
Care is our
Primary
Purpose



FIRSTCALL
FAMILY HEALTHCARE

RAY GRISHAM

Construction and concrete • Gainesville

All types of concrete work • Flat work & decorative • Backhoe service •
Light dozing • Site prep • Driveways • Low local minimum

Skid steer with tree shear attachment • Clear out fence rows, dig post holes, tree trim limbs!

417-257-4930

Dumpster roll off service

**Construction & remodeling waste removal
Gainesville & surrounding areas**

R&R DISPOSAL SERVICE



BUMPER TO BUMPER *BUMPER TO BUMPER, LLC*
Auto Parts, Insurance

**For Whatever You Need For Your Car,
Truck or Farm Equipment, Call Us!**

**Large Selection of In-Stock Parts
Special Orders Welcome**

Helpful, Knowledgeable People Who Can Answer
Your Car Repair Questions.

BUMPER TO BUMPER **YOUR AUTO PARTS SPECIALIST**

D.E. Pleasant, owner **(417) 679-4527** 16 Court Square
South Side of Square
in Gainesville

DUSTINS



BODY SHOP

Auto Body Painting & Repair
Insurance Claims Welcome • Free Estimates

HIGH QUALITY WORK

Uni Cure Paint Booth
Complete Paint Color Matching System
Kansas Jack Magna III Straightening System

DUSTIN WALLACE, Owner
Ph: (417)273-0016 • Cell: (417) 257-4985
HC 2 Box 2748 • Theodosia, MO 65761



WE PROTECT THIS.

This farm. This family. This dream.

This world is made of dreams like yours and at American Family Insurance, we believe everyone's dream deserves protection. That's why our local agents specialize in building customizable plans that protect the hard work of farmers and ranchers like you.

Contact me today to learn more or get a quote.



Dale Sanders, Agent
Dale Sanders Agency Inc
12 Court Sq, Gainesville
dsanders@amfam.com
Bus: 417-679-3000



American Family Mutual Insurance Company, S.I. and Its Operating Companies
6000 American Parkway, Madison, WI 53783
015410 - 10/18 ©2018 - 9685862

Gainesville Livestock Auction

Sale every Monday at 11 a.m.

Cattle accepted every day



Sale barn:
417-679-0030
Jim Donley:
417-989-0025

Owners: Jim and Lydia Donley
We appreciate your business!



Molly, owner/stylist
417-712-4489

Karen Cunningham, nails
417-372-2258

West side of the Gainesville square



Ozark Metalworks

Custom signs. Gates.
Handrails. Fire Rings.
Anything Metal!
Custom Fabrication
& Designs



65 Winchester Drive • Theodosia, MO 65761 • 636-751-8392 • Alan@ozarkmetalworks.com
www.facebook.com/Ozark-Metalworks-Theodosia

Open
Mon.-Fri.
8a.m.-5p.m.

Self-serve
ice machine
with the
cheapest ice
in town!



THEODOSIA CAR WASH

MANUAL AND AUTOMATIC BAYS
3 VACUUM CLEANERS
SHAMPOO AND FRAGRANCE MACHINE
LARGE OUTSIDE BAY FOR RV'S, CAMPERS, BIG BOATS

65 Winchester Drive • Theodosia, MO 65761 • 636-751-8392

KARLA **ESLINGER** **STATE SENATE**

Paid for by KarlaEslingerForSenate.com - Kenny Joplin, Treasurer

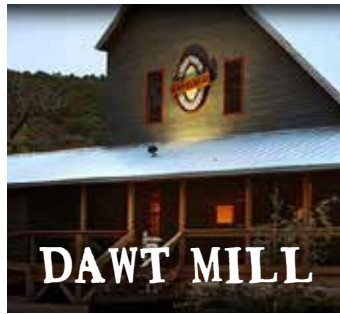


**Hard Work. Grit.
Real Missouri
Values.**

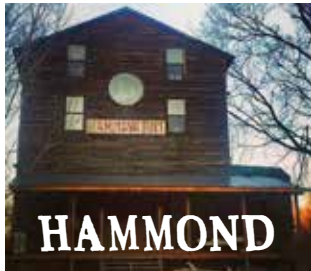
Serving the People of the Ozarks

The five remaining grist mills of Ozark County are a popular attraction with visitors of Ozark County, giving a glimpse of life in the region more than a century ago.

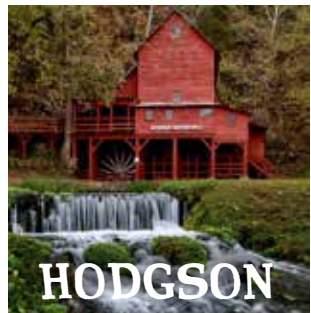
Historic GRIST MILLS



This rebuilt landmark, once the heart of a tiny Ozarks milling village founded in the mid-1800s, is the modern-day focus of a resort in a beautiful setting along the bank of the North Fork of the White River. Located northeast of Tecumseh on County Road 318, off Highway 160 via PP Highway, Dawt Mill was the last operating grist mill in Ozark County. Built in 1897, Dawt once was a town with a blacksmith shop, store, church and hotel. The first mill was built on the site in 1892, but later burned. The property has changed hands many times. The present mill was built in 1909 by Alva Hodgson. Following several owners through the years, Dr. and Mrs. Edward Henegar purchased the mill in 1995 and began a major restoration and renovation of the surrounding property. It is now a resort.



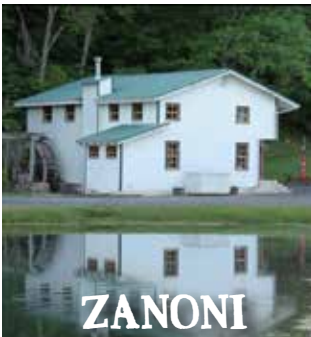
The original mill at Hammond was built in 1856 out of local logs. A replacement mill burned in 1876, and *that* mill's replacement washed away in a 1904 flood. The current structure was built as a four-story roller mill in 1907. At one time, tall black lettering on the side of the white mill identified the building as the "Home of Ozark Queen Flour." The mill, privately owned, is not open to the public, but it's viewable from County Road 855, off D Highway about 3 miles southeast of Thornfield. At one time the old mill was the heart of a quaint Ozarks village that also included a licensed distillery, a bank, a sawmill, general store and a post office that opened in 1894. Milling ceased at Hammond in the early 1940s, and the little town essentially disappeared after the Bank of Hammond closed. Photo by Jennifer Porter.



This beautiful old grist mill, on Highway 181 about 12 miles northeast of Gainesville, stands a short distance from Bryant Creek, where generations of residents and visitors have cooled off on hot summer days in a swimming hole just above the low-water Highway 181 bridge. The Sycamore access to the Bryant, a creek-gravel boat launch, is just downstream. The first mill on this site was built in 1883, powered by what is said to be the 15th largest spring in Missouri. Rebuilt by Alva Hodgson in 1897, the mill continued producing flour and meal for decades before falling into disuse. In 1969, Ken and Teena Harrington took over the lease and began producing Hodgson Mill stone-ground products that soon were distributed in grocery stores nationwide. Today those products, in packages carrying a stylized picture of Hodgson Mill, are still sold in some stores, now produced by an Illinois-based company. The mill is closed to the public, but the roadside parking area in front of the overflowing mill pond is a perfect rest stop and picture backdrop. Photo by Karen Eubank.



The original Rockbridge settlement, a few miles away from the present-day site, served as Ozark County's first seat of government. After the town was destroyed by raiders during the Civil War, the post office reopened in 1867 at Rockbridge's present site on Spring Creek off N Highway near the Douglas-Ozark County line. Rockbridge Mill was built here in 1892 by B. V. Morris, whose son, Frank, took over milling operations after his dad's death in 1918. Lile and Edith Amyx and Dr. M. C. and India Amyx purchased the property in 1954 and launched Rainbow Trout Ranch, one of the Ozarks' most successful and enduring resorts. Today, this picturesque attraction sits on 2,000 scenic acres, including 2 miles of sparkling clear Spring Creek stocked with rainbow trout from the resort's own hatchery. A wide variety of lodging facilities is available plus a full-service restaurant that attracts diners from throughout the Ozarks. Resort guests enjoy the swimming pool, hiking trails, a gun club and, in season, guided turkey and deer hunts. For more information, call 417-679-3619 or visit rockbridgemo.com. Photo courtesy of Rockbridge Rainbow Trout Ranch.



Located 9 miles northeast of Gainesville on Highway 181, Zandoni Mill features a big, overshot water wheel powered by a hillside spring with a daily average flow estimated at 194,000 gallons. The current mill is the successor to earlier versions that have operated on the site since before the Civil War. A village grew up around the mill, including a general store and post office, a blacksmith shop and a cotton gin. Milling operations ended in 1951, but the general store and post office continued at Zandoni until owner A.P. Morrison's death in 1969. Morrison's daughter, Classy Shanks, then became postmaster and moved the post office a few miles west on Highway 181. Later Zandoni owners Dave and Mary Morrison built a large home they eventually adapted into a popular bed and breakfast; they also rebuilt the mill as a quaint site for special events, including weddings and family reunions. Today Zandoni Mill is owned by a private family who offers the scenic place as a special event and wedding venue. The mill and nearby general store and post office, long closed, are viewable from nearby Highway 181. Photo courtesy of Zandoni Mill.



WHEN YOU NEED HELP WITH
MEDICARE OR HEALTH INSURANCE
CHOICES, WE CAN HELP!

SENIOR HEALTH MATTERS, LLC

WE CAN HELP WITH MEDICARE AND MO MEDICAID
We also offer assistance with:

- Individual , Small and Large Group Health Insurance
- Whole and Term Life
- Market Place - Affordable Care Act
- Accident and Hospital Plans
- Dental and Vision Plans



Figuring out your options for Medicare
or other healthcare options can be
confusing and overwhelming.

WE KNOW!!!

Let one of our independent, licensed and experienced brokers **HELP**
you every step of the way!



Licensed in MO, IL, AR, TX, AZ, CO,
OK, KY, OH, WV

www.sresourcesmedicare.com

Michelle Funk, RN - *Hablo Español*
Licensed Insurance Agent
417.324.7600
michelle@sresourcemedicare.com

2nd year as top
CMS agent for
marketplace
clients in the
country



Special Sections

Annual glossy-cover magazine ad prices

1/8 page - \$95 • 1/4 page \$130 • 1/2 page \$225
Full page \$325 • All prices include full color!



THE REAL OZARKS MAGAZINE

Publishes annually in March

- Vacation guide to the Ozarks
- 5,000 copies distributed across Missouri
- Can be accessed online all year
- Information on lake and river fun, horseback riding, canoeing, hiking, golfing, dining, camping, historic mills, fishing and hunting

Make sure you're included in Ozark County's most important marketing opportunity!



TIMES PAST MAGAZINE

Publishes annually in July

- Compilation of the weekly Times Past columns from past Times editions
- Filled with eye-catching historical photos and tidbits from Ozark County's history
- We'll work your business or family history into your ad for this magazine



HOOTIN' AN HOLLARIN MAGAZINE

Publishes annually in September

- Festival guide to the famed Hootin' an Hollarin festival in Gainesville
- Magazine mailed to all subscribers and distributed throughout the festival
- Includes festival schedule, information on events, bands, square dancing and more!

These magazines go quick! Make sure your business is included in the fun!



OZARK COUNTY COOKIN'

Publishes annually in November

- Features local cooks and local recipes
- Given away free at area grocery stores
- Makes a great gift for family or friends
- Proceeds benefit local food pantry and Christmas toy drive

This glossy-covered magazine-style cookbook is distributed just before Thanksgiving.

Want your business included in *The Real Ozarks*?

Contact Ozark County Times
advertising manager Jenny Yarger
417-679-4641 or jenny@ozarkcountytimes.com

Online pricing Guide

www.ozarkcountytimes.com

The Times' digital marketing service offers highly effective, low-cost advertising solutions that are essential for small, medium and large businesses.

Website banner ads

Banner ads are the core of online advertising and will build your brand, drive traffic to your website and boost sales for your business.

Size options

Big Box • 300 x 250 pixels • \$40/week

Top Banner • 680 x 90 pixels • \$40/week

Sidebar • 300 x 120 pixels • \$30/week

**More ways for your
business to be seen!**

Facebook sponsored post

Reach an entirely new pool of prospective customers by taking advantage of the Times' 15,000+ (and growing) Facebook followers. Let us put together a print ad and FB sponsored post package for your business or event.

Ozark County Times
Sponsored Post

Lost Woods Pub is hosting a New Year's Eve Bash Monday night Dec 31st. Food at 6 p.m. and live music with inflexion starts at 8 p.m!

Lost Woods Pub • Theodosia

New Year's Eve Bash

Monday night, Dec. 31
Food served beginning at 6 p.m.
Music starts at 8 p.m.

Designated drivers available
50/50 raffle • Indoor games • Dance floor
Party Package full of everything you need to celebrate with us!
Party hats, noise makers and champagne

Call to RSVP or for more information • 417-273-1877



Beauty awaits down Ozark County's many remote and rural county roads. This photo was taken near Tecumseh by Amy Ingalsbe.

OZARK COUNTY MILL TOUR

63 miles, approximate drivetime 2.5 hours

Ozark County is home to five historic grist mills (see page 70) and many visitors enjoy a driving tour to visit them. Here's a route that lets you see the four mills on the west side of the county. A fifth mill, Hammond, on County Road 855 off D Highway south of Thornfield, has been converted to a private residence.

Directions: Starting from the Gainesville square, head east on Highway 160 to Highway 181. Travel several miles on Highway 181, going past the Caney Mountain Conservation Area and continuing to N Highway. Head north on N for 10-12 miles, crossing Highway 95 and continuing on N Highway to County Road 142 (watch for the Rockbridge sign). After visiting Rockbridge, return to N Highway and retrace your route back to Highway 181. Turn left (east) and drive along the ridge and down the steep Zانوني Hill. Zانوني Mill is on the left (north) side of the road at the bottom of the hill and is viewable from the highway. Continue on Highway 181 another 5 miles or so, and shortly after crossing Bryant Creek, you'll see Hodgson Mill on the right (east) side of the road. Enjoy a photo stop and then head on to Dawt Mill by con-

tinuing northeast on Highway 181 to its junction with H Highway. Turn right (south) on H and continue to PP Highway. Turn right onto PP, and a mile or so after crossing the North Fork of the White River, turn right (west) onto County Road 318 at Clear Springs Church. Dawt is about a mile down the road. To return to Gainesville, get back on PP and continue southeast to Highway 160. Turn right (west) on 160 and drive about 11 miles.

GLADE TOP TRAIL LOOP

70 miles, approximate drivetime 3.5 hours

A trip to the Ozarks isn't complete without a ride over the Glade Top Trail (see page 40), Missouri's first National Forest Scenic Byway. The 23-mile gravel roadway offers travelers glimpses of some of the most spectacular panoramic views in Missouri. This drive is particularly scenic during the fall months when the leaves have changed color and the Ava Chamber of Commerce sponsors the "Flaming Fall Revue" event along the trail. The Caney Picnic Area, about halfway, is a nice place to stop and enjoy a picnic lunch, a beautiful view and a breath of Ozark Mountain air. Continue to the trail's end near the Longrun community then drive on to Theodosia to view Bull Shoals Lake before

returning to Gainesville.

Directions: Starting from the Gainesville square, head north on Highway 5 for 27 miles into Douglas County. Turn left (west) onto Douglas County A Highway a few miles south of Ava. (Be careful not to turn onto Ozark County A Highway south of Wasola.) Continue on Douglas County Highway A for 3.6 miles. Turn left onto County Road 409 at the sign for Glade Top Trail. Follow the signs along the 23-mile trail. At the trail's end, you can return the way you came or, at Wolf Junction, where the trail splits, bear left on Forest Service Road 147 for about 2 miles. The gravel road will turn onto hard-surfaced Highway 95 near Longrun. Turn right (south) onto 95 and drive to Highway 160. Turn left (east) onto 160 and continue about 20 miles back to Gainesville. You will cross Theodosia Bridge over Bull Shoals Lake about 3 miles after turning onto Highway 160.

EXPLORE THE BACKROADS

Some of the best Ozarks scenery is off the beaten track. So fill up the gas tank, check the tires, pack a lunch and explore the winding, roller-coaster roadways of Ozark County and beyond. Endless beauty is waiting just around the bend!

COOPER DRILLING

Quality Work at a Reasonable Price.



Call for a FREE Estimate

Serving our community for over 40 years.

Rick 417-543-3939

Office 417-273-4775

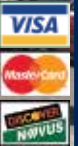
H&W
automotive
417-679-0074



U-HAUL



*Located at the shop building behind Nash & Son's
Auto Sales on Hwy. 160, Gainesville, Missouri*



HIGH QUALITY, LOW PRICES!

For the best deals around, shop at Longdollar

*Great selection
of home decor*



Catnapper

SYMBOL
Your life, your mattress



RECLINERS • SOFAS • LOVESEATS

*Beautiful Bedroom &
Dining Room Furniture!*

MATTRESS SETS AND LINENS



MAYTAG



Shop Local

*"Where Saving
Money Matters"*

LONGDOLLAR

**FURNITURE
AND APPLIANCE**

212 North Jefferson,
Ava, Missouri
1 Block north of the square
in the Barnes Shopping
Center

417-683-3424

Nancy Barnes Owner-Operator

Open: Tues. - Fri • 9 am - 5 pm
Sat. • 9 am - 2 pm
(Closed Sun. & Mon.)



CHANEY



MONUMENT WORKS, LLC

Custom monuments since 1935

*Specializing in granite memorials, etchings,
cemetery lettering – all your memorial needs.*



We work with families to insure that their customized monument will be a lasting memorial to their loved one.



D&D Signs

Vinyl Letters
Truck Lettering
Windows and Magnetic Signs

Monday-Friday 8 a.m.-5 p.m. • Saturday 8 a.m.-noon
417-679-3720 • 417-989-0317
Highway 160 • Gainesville, MO

chaneymonument@gmail.com

chaneymonuments.com

SOUTHERN HILLS

AUTO PLAZA 417-257-7531



1343 Southern Hills Center • West Plains, MO
www.southernhillsautoplaaza.com



24 HOURS A DAY

Count on us, two generations of the Wallace family, born and raised in Ozark County, to handle all your insurance needs.

WALLACE

INSURANCE AGENCY LLC

LIFE. AUTO. FARM. HOME. COMMERCIAL.

Jarrett Wallace, Licensed Agent/Owner
Marlin Wallace, Agent

On the corner of Elm & First St. • Gainesville, MO
(across from the Post Office)

Office Hours

Mon-Fri 8 am - 4:30 pm

PROGRESSIVE

TRAVELERS

CEM INSURANCE

Allstate
You're in good hands.

THE HARTFORD
Liberty Mutual

For a free quote stop by or call
Office: 417-679-4918 or 417-679-4919
Cell: 417-335-0239



Southern Roots llc

HAIRCUTS

Creating styles for men & women, from fades to classic bobs

TREATMENTS

- Perms - yes, we still do them!
- Olaplex Treatment (for stronger, healthier hair)
- Malibu C Treatments
- Smoothing Treatments

COLORS

Offering a wide variety of color services, Blonding, Balayages, Fashion Colors, Highlights & more

RETAIL

All your hair care needs in stock for convenient pick up! Shipping available



Kristie Ashmead
owner/stylist

417-712-4045

34 Court Square, Gainesville
Instagram – SouthernRoots417





CENTURY 21.
Ozark Hills Realty, Inc.

417-257-3994 (Cell Phone)
417-255-2121 (Office Phone)
mwrealtor@gmail.com
1822 Porter Wagoner Blvd.
West Plains, MO 65775

MONTY WIENS
Realtor
2016013721



Each office is independently owned and operated

Get your local news just the way you like it

To subscribe call
417-679-4641

or email
regina@ozarkcountytimes.com




Ozark Waterways Real Estate, LLC.
417-257-3589
www.ozarkwaterways.com
Licensed in Missouri and Arkansas
"Let our experience work for you."




Barb Stark
Broker/Owner
417-257-3589
OzarkWaterwaysmo@outlook.com

Roy Johnson
Sales Associate
417-989-9298
royjohnson1939@gmail.com

Thomas & Douglas

Certified Public Accountants

With the past two years filled with unknowns and uncertainties it can be hard to know who you can trust.

RELIABLE ACCOUNTING

Let us make things easy!

- ✓ Income Tax Preparation & Consulting
- ✓ Accounting & Payroll Services
- ✓ Financial Management & Consulting Services
- ✓ Financial Statement Audits, Compilations & Reviews



Kenny Thomas, CPA

Jennifer Douglas, CPA

13 Court Square • Gainesville, MO • 417-679-0095

400 Hailey Street • Ava, MO • 417-683-3091



Debra Schilling Smith Matchmaker Covering The Ozarks® Offers national market exposure with local expertise

**REAL ESTATE
EXPERT
COMMITTED
INNOVATIVE
PRINCIPLED
EARNEST
= RECIPE FOR SUCCESS**

A full-service REALTOR® licensed in Arkansas and Missouri who can assist you as a buyer or seller in making the right decision for you



Debra Schilling Smith
REALTOR®, LandPro®
Licensed in Missouri & Arkansas
C2EX® | SRES® | SRS® | ABR®
RENE® | PSA® | MRP®
Able to list on Arkansas MLS
and Missouri MLS

**RANCHES. FARMS. HUNTING. RESIDENTIAL. COMMERCIAL.
VACATION HOMES. SECONDARY HOMES. LAKE HOMES.**

2 Offices to serve you...West Plains and Gainesville
Cell: (voice/text) **417-251-5081 • 417-256-1000**
Email: debra@CoveringTheOzarks.com
www.matchmakercoveringtheoazarks.com

HUNTING

If you're interested in hunting, Ozark County offers many options including deer, turkey, black bear, predator, small game, dove and other birds.



Hunters have an opportunity to harvest a turkey in spring and again in fall. Paul Goodwin of Gainesville is pictured after a successful hunt.

Public hunting:

Caney Mountain Conservation Area includes 6,599 acres of public hunting (see pages 36-37), while Rippee Conservation Area provides another 419 acres and the Mark Twain National Forest has another 38,000 acres of public land. For more information about these areas and others, call the Missouri Department of Conservation's Ozark Regional Office at 417-256-7161 (or visit mdc.mo.gov) and the Ava-Cassville-Willow Springs district office of the Mark Twain National Forest at 417-683-4428 (or visit fs.usda.gov/mtnf).

Offering healthy populations of whitetail deer and turkey with relatively low hunting pressure, Ozark County is an outdoorsman's paradise.

Permits.

You can buy hunting permits online at huntfish.mdc.mo.gov/permits, by phone (800-392-4115), through the smartphone app "MO Hunting," at any Missouri Department of Conservation office or from more than a thousand vendors around the state.

Ranges.

Caney Mountain Conservation Area features three public shooting ranges, one archery range, one rifle/handgun range and one blackpowder range. The archery range and the blackpowder range are located near the main entrance off Highway 181. The rifle/handgun range is located near the Caney Mountain entrance off Highway 5 north of Gainesville. See page 36 for more information about Caney Mountain.

How You're Treated Matters!

Call one of our offices today and speak with our friendly associates.

Solomon Cornelius
Owner/Broker



*Licensed in
Missouri & Arkansas*

309 E Main, Suite 1
Willow Springs, MO
417.469.2869

316 Alton Rd
Thayer, MO
417.264.2330

New Name, Same Game... Great Service!

Solomon Cornelius aka "Corn" Re-Branding & Expanding

Licensed broker since 1997, Owner/Broker since April 1, 2004 Cornelius has run multiple locations as a National Franchise and more recently Independent as Willow Springs Realty LLC serving both Missouri and Arkansas. A former Educator and Coach, Solomon supports multiple local school programs, Veteran programs, Senior Center meals and many other community projects. Moving forward Cornelius' Team will now be known as Monark Realty. Pronounced Monarch like Royalty yet derived from our service area MO-n-ARK. Our new logo designed with Mizzou Black & Gold and Arkansas Razorback Red. Stay Tuned for updates in "Corn Country"...

New location: 316 Alton Road, Thayer MO
and as always 309 E. Main, Suite 1 in Willow Springs. Stop by and meet the team...



Solomon Cornelius

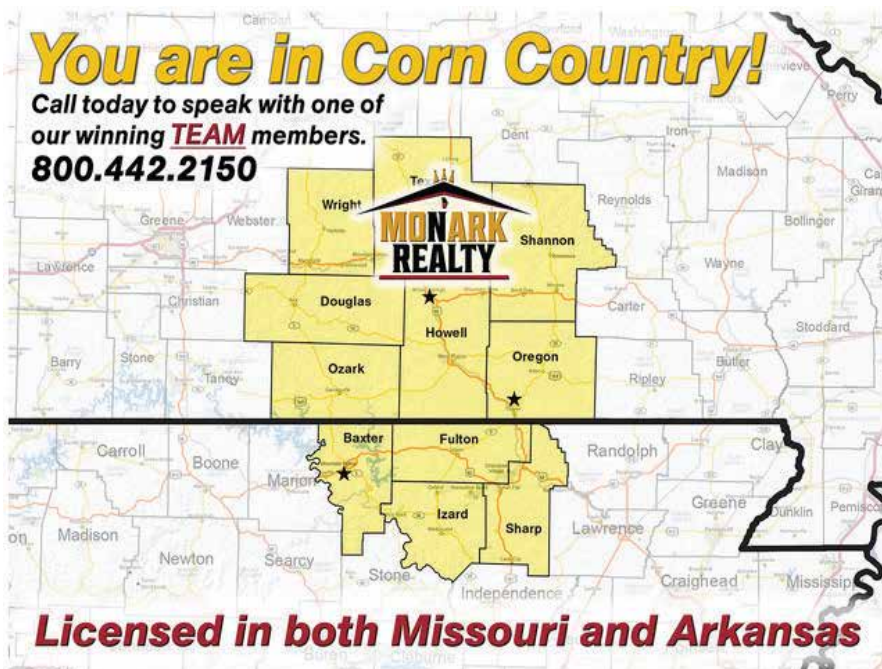


Derek Carlson

How You're Treated Matters!

You are in Corn Country!

Call today to speak with one of
our winning **TEAM** members.
800.442.2150



Solomon Cornelius 417-252-0499
Kimmy Conder 417-855-0172
Travis Brake 417-425-7583
Lu Adams 417-254-0508
Chris Cornelius 417-252-9417
Jon Ediger 417-250-0220
Bobby Bair 417-280-5696
Bob Parker 417-257-8711
Michelle Brake 417-459-6187
Derek Carlson 417-840-4058

417-469-2869
417-264-2330

Call one of our offices today for the royal treatment

PEARSON'S PUMP SERVICE WELL DRILLING

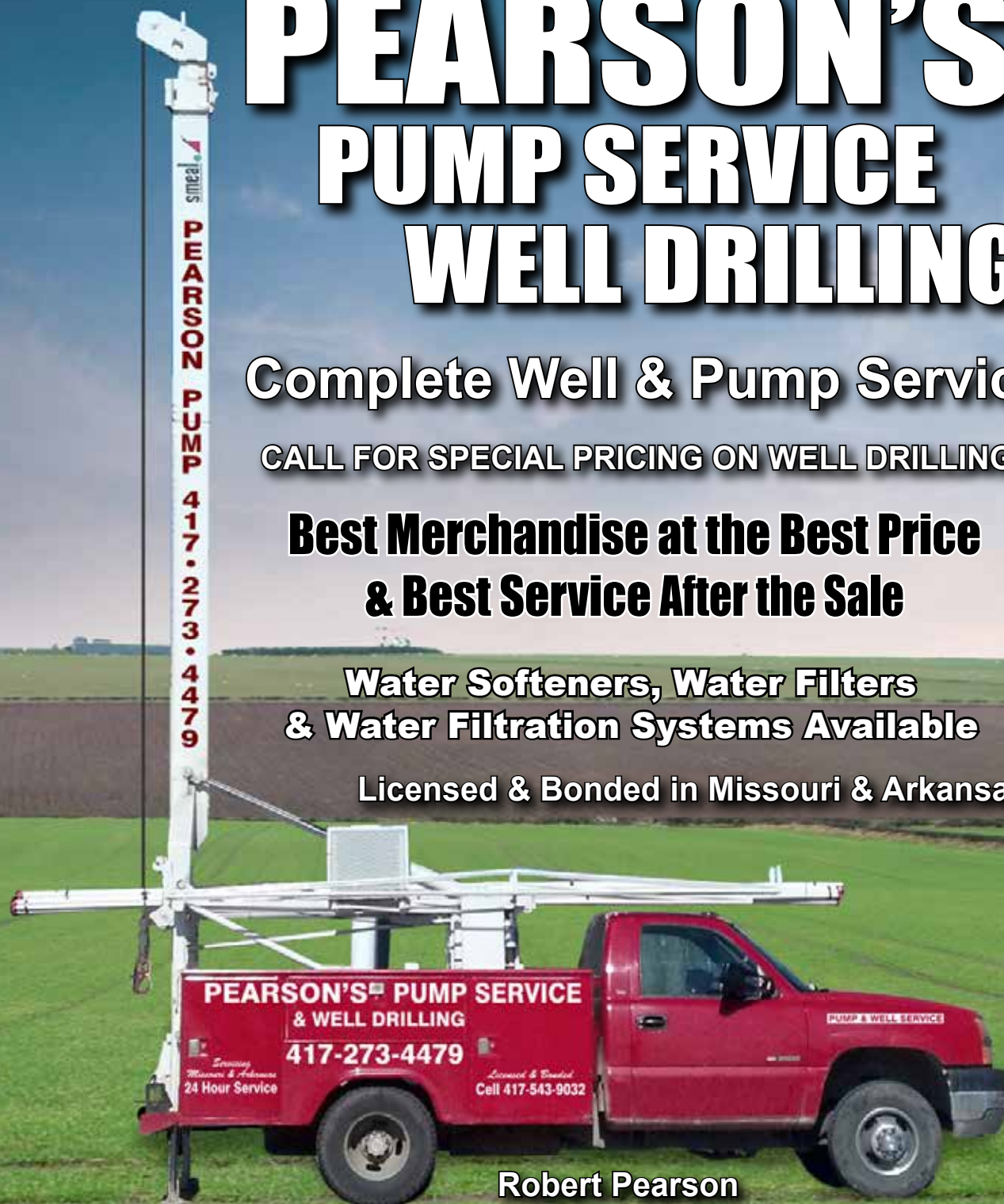
Complete Well & Pump Service

CALL FOR SPECIAL PRICING ON WELL DRILLING

**Best Merchandise at the Best Price
& Best Service After the Sale**

**Water Softeners, Water Filters
& Water Filtration Systems Available**

Licensed & Bonded in Missouri & Arkansas



Robert Pearson

417-273-4479



LICENSED IN MO, IL, KY, AR, KS

FARM, RANCH, & RECREATIONAL

YOUR *LAND LEADER* IN REAL ESTATE

6,500+ ACRES SOLD EVERY WEEK

OUR NATIONAL NETWORK SELLS OVER 6,500
ACRES EACH WEEK ACROSS THE NATION

- PROPERTY SYNDICATION PROMOTES TO 1,400 WEBSITES
- NATIONAL PUBLICATIONS REACH OVER 500,000 READERS
- OVER 20 MILLION BRAND IMPRESSIONS PER MONTH
- OUR PROPERTIES RECEIVE MORE INTERNET MARKETING THAN THE COMPETITORS
- WE DISTRIBUTE OVER 80,000 LANDLEADER CATALOGS TO HIGH END CLIENTS, BUYERS, AND SELLERS EACH YEAR

CONTACT US TODAY

855-BUY-DIRT



Powered By



Visit LIVINGTHEDREAMLAND.com | 855-BUY-DIRT



SELLING THE OZARKS

**CALL DAN TO SELL YOUR
PROPERTY!**

Daniel Morrison
417-257-9020
1-855-677-7965



Bull Shoals Lake specialists since 1974



SIERRA OZARK CORP. REAL ESTATE

5957 Hwy 160, Theodosia, Missouri • office: 417-273-4212

H. K. Gaulding • cell: 417-299-0110 • h.k.gaulding@gmail.com

Don Smiley • cell: 417-543-3685 • donsmiley123@gmail.com

website: sierraozark.com



FESTIVALS AND FUN

Area events

Hootin an Hollarin queen pageant kicks off the annual three-day festival held in late September. Above is the 2022 Hootin an Hollarin queen and court.

Fireworks displays

Fourth of July and Labor Day weekends

Celebrate the Fourth of July, Ozark County-style! The county's free fireworks displays are open to everyone, although related festivities, including games, food vendors and fundraiser offerings may have charges or request donations. Enjoy the fun on Fourth of July weekend at the Theodosia Corps of Engineers park and Theodosia Marina Resort off Highway 160 on Bull Shoals Lake, and on Labor Day weekend at the Pontiac campground and Pontiac Cove Marina, also on Bull Shoals. Also, the town of Bakersfield generally hosts a fun-filled "picnic" featuring vendors, music and fireworks sometime in July. The celebration usually also includes the annual Bakersfield all-school reunion. Watch for updates on the "Festival Committee of Bakersfield" Facebook page.

Bakersfest

Held in September

Bakersfest, the annual festival that celebrates everything Bakersfield, packs the little town with happy folks who gather each year on the second Saturday in September. Festival events vary a little with each rendition but usually include a big car show and lots of family-style activities with food vendors and game booths that fill the town's Pride Park with colorful fun. The event usually includes

the crowning of Bakersfest royalty as well. Watch for updates on the "Festival Committee of Bakersfield" Facebook page.

Hootin an Hollarin

Sept. 21-23, 2023

Ozark County's Hootin an Hollarin festival has been drawing families, friends and visitors together on the Gainesville square for more than 60 years. The beloved event celebrates old-fashioned traditions and highlights downhome country music all day and into the night. Square dancers swirl under the lights, accompanied by some of the Ozarks' best fiddlers and strummers. A wide variety of contests include gun and archery shoots, horse-shoe pitching, a quilt show and such silliness as hog- and husband-calling contests that keep the laughter and adrenaline flowing. And through it all, a large outdoor craft fair offers the cleverest hand-made items imaginable.

Wonders of Christmas on the square

Gainesville, a Friday in December

The annual Wonders of Christmas event in Gainesville transforms the square into a magical holiday wonderland. The festival is generally held on a Friday night in the first two weeks of December. Vendors selling a wide variety of homemade food, festive drinks and Christmas present options give

guests lots to look at. A Mr. and Miss Merry Christmas contest, open to area children ages 4-5, usually is held in the gazebo on the northwest side of the square. The annual Jingle Bell Parade is the largest parade in Ozark County next to the annual Hootin an Hollarin parade. The night generally wraps up with Santa and Mrs. Claus visiting with children in the gazebo and the annual lighting of the gazebo's Christmas tree. Search for "Wonders of Christmas" on Facebook or contact Paula Rose at 417-989-1282 for information on the event.

Bakersfield Christmas parade

Bakersfield, a Saturday in December

The hardworking volunteers of the Bakersfield Festival Committee put on a jolly good time each December with a parade and festival. The event opens with a pancake breakfast with Santa Claus at the Bakersfield School cafeteria, followed by a Christmas parade. The parade awards cash prizes for best floats, school-affiliated entries and decorated horses.

After the parade is the crowning of Mr. and Miss Merry Christmas (open to 9th through 12th graders), Mr. and Miss Snowflake (open to 6th through 8th graders) and Little Mr. and Miss Merry Christmas (open to Kindergarten through 5th graders).

For more information, search for "Festival Committee of Bakersfield Mo."

LITTLE NORTH FORK COUNTRY STORE

11844 St. Hwy. 95, Thornfield • 417-265-1112

Dine In Or Carry Out

**Monday through
Thursday**

6 a.m.-5:30 p.m.

**BREAKFAST and
LUNCH
SPECIALS**

**Made To Order
Cheeseburgers and
Philly Cheese Steaks
Lunch Meats**

Sunday

11 a.m.-5:30 p.m.

CATERING FOR

BIRTHDAYS,

WEDDINGS,

SOCIAL EVENTS,

FUNDRAISERS

NO EVENT TOO

SMALL OR TOO BIG

COMING MAY 1

**Outdoor Patio & Bar Area • Live Music
5-9 p.m.**

Friday & Saturday

Steak or Bar-B-Que Night & Pizza & Burgers

Homemade Soups

Friday and Saturday

6 a.m.-6 p.m. p.m.

**BREAKFAST and LUNCH SPECIALS
DINNER SPECIALS**

**hand-rolled pizza with secret pizza sauce recipe,
stone oven baked**

REAL BAR-B-QUE RIGHT HERE IN THORNFIELD!

**Beef brisket, chicken, pulled pork and fall off the
bone ribs**

**Gas, Diesel & LP Gas
Beer, Wine & Liquor
Grocery, Ice & Deli
Live Bait**

101
TIRE AND REPAIR LLC




5250 STATE HIGHWAY 101 • BAKERSFIELD
417-284-1484

NEW AND USED TIRES • TUBES • BATTERIES
TIRE AND TUBE REPAIR • OIL AND BRAKE CHANGES
CHECK ENGINE LIGHT DIAGNOSTICS

TUESDAY—FRIDAY 8 AM—5 PM
SATURDAY 8 AM—NOON


WADE LAW OFFICE, LLC
CHRISTOPHER D. WADE
ATTORNEY AT LAW



- Criminal Defense
- Auto Accidents / Insurance Claims
- Estate Planning / Trusts / Wills
- Real Estate
- Probate
- Adoptions
- LLC / Corporations Consulting and Start Up

P.O. Box 698
103 S. Jefferson St.
Ava, MO 65608
417-683-4117

Website:
www.wadelawoffice.net
Facebook:
Wade Law Office, LLC




CONTACT US:

Church Phone: 417-284-1708
Pastor: Rev. Dr. Samuel Evans
Clerk: Ruthie Hendrycks, 507-995-0228
Email: clearspringsgbchurch@gmail.com
Website: www.clearspringsgbchurch.com
Facebook: Clear Springs Church
661 County Road 317,
Tecumseh, MO 65760

MONTHLY ACTIVITIES:
3rd Sunday Fellowship Potluck Dinner

ANNUAL ACTIVITIES:
Spring – Valentine and/or Easter Dinner
Fall Fish Fry
Fall Hayride.....And More

SUNDAY:
Adult Bible Study - 10 AM
Worship Service - 11AM
Choir Practice - contact for day and time

*“Enter Our
Open Door to Be
Transformed Into the
Light of Jesus Christ”*

1135 State Highway PP, Tecumseh, MO
(on the corner of Highway PP and County Road 318 near Dawt Mill)

CLEAR SPRINGS
GENERAL BAPTIST CHURCH



This dramatic sunset photo was taken and submitted by Teagan Hathcock of Thornfield.

**EXPERT
RESPIRATORY
CARE**
close to home
In Gainesville

Dr. Praveen Datar
*Board Certified in
Pulmonology*

Ozarks Healthcare's family medicine clinics are committed to improving the quality of life for all the people in our region through accessible health care services. We know how important it is to have high-quality health care available in your own community. That is why we have invested in your health through our physicians, nurse practitioners, and clinics.

Gainesville Pulmonology services include:
Asthma | COPD | Lung Screenings

Call 417-679-4613 to make an appointment.

Gainesville
39 Medical Drive
Gainesville, MO 65655



THE GRILL at WHISPERING WOODS

Check Out Our Website for
NEW Menu Items

Burger of the Month to Gourmet Dinner Entrées

**Beer & Wine • Patio Dining with Fire Pit
Live Music Outdoors**

Thursday & Sunday Nights at 6:30pm (*weather permitting*)



Special Catering Menu Available
Call for Details



Completely Renovated Cabins
All the Amenities You Will Need



Purchase a Burger of the Month each month & your 12th one is FREE!



Join Kim & European-Trained Chef Richard, for a culinary experience you'll remember.

THE GRILL
at
WHISPERING WOODS

Open Year-Round | 11am-9pm
for Lunch & Dinner | Tues-Sun

Reservations Recommended

870-499-5531



Updated Menu & Photos at:
WhisperingWoodsAR.com

15 Min. from Mountain Home • Hwy 177 Between Norfolk Dam & Jordan, Overlooking the Lake



PLACES TO EAT & DRINK

BEER BELLY'S BAR & GRILL

216 State Highway 5 south, Gainesville
417-679-0405

Beer Belly's Bar & Grill, located on Highway 5, south of Gainesville near the Missouri - Arkansas line, is known for its diner classics with a twist. The menu features a number of starters including the house favorite southern bang bang shrimp and an Ozarks legend, pickle fries. Main entrees include burgers and handheld sandwiches, fried gulf shrimp and chicken strips, steaks, barbecue platters and artisan flatbread pizzas. A kids menu offers the young ones in the group a few choices, and for dessert guests can sample the restaurant's famous brown butter cake or end the meal with a simple ice cream sundae. The restaurant offers draft and bottled beer, as well as a full bar. The restaurant is located in the Hitch 'N' Post plaza, see ad, page 96.

CASH SAVER PANTRY

Highway 160, Theodosia;
417-273-4784

This full-service supermarket in Theodosia is the perfect place to pick up food to cook in your cabin or rental with kitchen. It also in-

cludes a deli that sells a variety of sandwich fixings, famous fried chicken and picnic supplies for guests on the go. See the Theodosia Marina Resort ad on page 4.

COOKIE'S RESTAURANT

Off Highway 160, Theodosia;
417-273-4444

tmrbullshoals.net

If plan to visit the Theodosia area on Bull Shoals Lake, be sure to make a stop at Cookie's restaurant for down home, country cooking. Cookie's is a family style restaurant featuring a menu that has something for everyone: hamburgers and hotdogs for the youngsters (and not so youngsters), salads, soups and sandwiches for the light eaters and pastas, meats and seafoods for the more discriminating palate. Folks love their full breakfast menu, daily and nightly specials, famous fried chicken, prime rib on Friday and Saturday nights, homemade pies and other desserts! The restaurant is located near the Theodosia Marina Resort entrance, just a short distance from the Highway 160, with a gorgeous view of Bull Shoals Lake. Cookie's can accommodate large groups in a party room, smaller parties in the dining room and can cater for special occasions. See the Theodosia Marina Resort ad on page 4.

COUNTRY APRON BAKERY

5566, US Highway 160, Theodosia;
417-273-2295

If you're looking for a welcoming family atmosphere where you always feel at home and sample some of the best baked goodies around, this is the place for you! Specializing in homemade cinnamon rolls, sticky buns, pastry, cakes and cookies, you can eat in or take it to go. In addition to sweet treats, Country Apron Bakery also offers a full breakfast menu and a variety of lunch specials. See ad page 95.

CROSSROADS DRIPS & DIPS

Highways 5 (North) and 160, Gainesville
417-679-4847

This combination coffee shop and ice cream parlor opened in March 2022, and it's been popular ever since. The menu features traditional coffee, Americanos and iced coffees, as well as frappes and hot and cold lattes with flavored syrups. Guests can also enjoy energy drink amino boosters and fresh fruit smoothies. Hand-dipped ice cream cones made with Missouri-owned The Ice Cream Factory ice cream and milkshakes round out the menu. See ad, page 90.

Continued to page 91

160 LAWN & GARDEN CENTER

417-679-2500

 **Husqvarna**

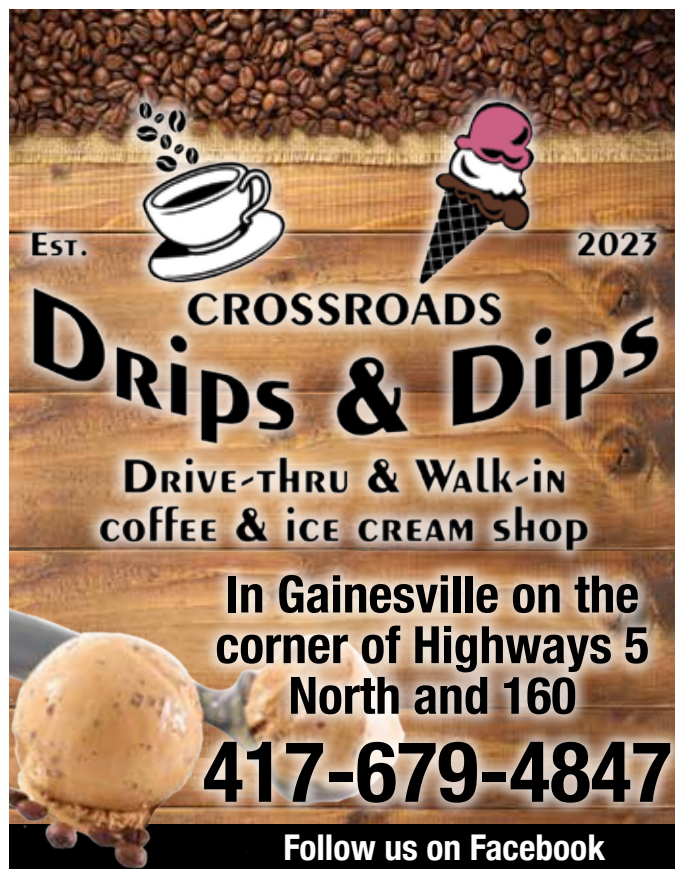
**Sales
&
Service**





Lawn Mowers • Chainsaws

We repair MOST brands of small engines ~ Robby Walrath

Open 8:30 am - 5 pm • Monday - Friday

EST.  2023 

CROSSROADS
Drips & Dips

DRIVE-THRU & WALK-IN
COFFEE & ICE CREAM SHOP

In Gainesville on the
corner of Highways 5
North and 160

417-679-4847

Follow us on Facebook

Make It A Meal

Burgers - single, double, triple, quad. Chicken Wrap - grilled or crispy. BLT. House Salad. Cod Fish - 3 piece. Cod Fish Sandwich. Chicken Tenders - 4 piece. Chicken Sandwich - grilled or crispy. All Beef Hot Dog. Grilled Cheese.

Sides

Crispy Fry's. Cheese Fry's. Onion Rings. Tater Tots. Fried Mushrooms. Spicy/White Cheese Curds. Funnel Cake Fry's

fyre fry's

417-989-9029

11am-6pm



5653 US HWY 160 • Theodosia



TUESDAY SPECIAL

Hamburger or
Chicken Wrap
with fries & soda

\$11+tax!



Kids Meal

Includes fry's and Kool-Aid jammer

2 Piece Chicken Tender. Grilled Cheese. Hot Dog



Upgrades

Chili. Nacho Cheese. Slice of Bacon. Grilled Onions. Grilled Mushrooms. American Cheese. Swiss Cheese





PLACES TO EAT & DRINK

One of the most unique places to have lunch in Ozark County is inside Fyre Fry's school bus cafe, which offers booths and tables and a bar to sit at to enjoy lunch.

FYRE FRY'S

Highway 160, Theodosia
417-989-9029

This food truck establishment in Theodosia is just a short distance from Bull Shoals Lake and has excellent burgers, chicken wraps, BLTs, salads, fish sandwiches and more. Picnic tables with sun umbrellas and a renovated school bus-turned-cafe on site offer guests a place to enjoy their meal before getting back to the lake. See ad, page 90.

HITCH N' POST

192 State Highway 5, Gainesville
417-679-0555

The Hitch 'N' Post is located on Highway 5, south of Gainesville, near the Missouri - Arkansas line. In addition to a 24-hour fueling station and Beer Belly's Bar & Grill (see page 89), the Hitch 'N' Post store features a deli with sandwiches and basic groceries. The store is open 7 days a week. See ad, page 96.

JUST JACKIE'S

Pontiac campground off W Highway
Pontiac; 417-679-2593

This seasonal café in the Pontiac campground off Highway W in Pontiac is a mecca for lake-going tourists and locals alike. Folks come for the pizza and the famous wings, plus beer, wine and soda. Indoor and outdoor dining areas. Call to confirm hours. See Pontiac Cove Marina's ad, page 21.



In addition to its own brewed beer on draft, Lake Bums Brew Co. offers its canned beer to purchase to go. The brewery also has wine, specialty cocktails and non-alcoholic options.

LAKE BUMS BREW CO

112 Parrothead Lane, Pontiac
417-679-0070; lakebumsbrewco.com

Ozark County's only craft beer brewery and tasting room serves an innovative variety of its own tasty brews including its award-winning Indian Point IPA and Pine Branch porter. Locals know to pick up a pizza or other take-out options from nearby Just Jackie's restaurant – or bring your own snacks or sandwiches. Those visiting by boat can call to be picked up in the "Brewber" bus. Open year-round. See ad page 22.

LITTLE NORTH FORK STORE

Highway 95, Thornfield
417-265-1112

This country store on the banks of the Little North Fork River at Thornfield boasts a lot for a small town store with gas, diesel, beer, wine, liquor, groceries and a deli. The menu features breakfast and lunch specials daily as well as hand-rolled, stone oven baked pizzas with homemade sauce, homemade soups, barbeque brisket, chicken and fall-off-the-bone ribs. The store also offers catering for events large and small. See ad page 85.



Just Jackie's pizza

Continued to page 93

**T
A
K
E**



**GREAT FOOD
KARAOKE FRIDAYS
GREAT PARTY PLACE
POOL TABLES**

**9-Ball Pool Tournament
3 p.m. Sundays**

**8-Ball Pool Tournament
7:30 p.m. Tuesdays**



**Opening at noon
Seven Days A Week
417-679-0275**



**714 State Hwy 5 South • Gainesville MO, 65655
1/4 mile into Missouri from AR/MO State Line**



PLACES TO EAT & DRINK

LOST WOODS HIDEAWAY

131 Lost Woods Drive, Theodosia
417-273-4877
www.lostwoodsgolfcourse.com

The Lost Woods Pub is located at the Lost Woods Hideaway golf course in Theodosia, near Bull Shoals Lake. The restaurant and pub has gained a reputation for having delicious pizza and hot wings. The menu also includes a variety of appetizers, sandwiches, basket dinners are more. Whether you're coming off the course or just visiting the area, this stop is great for lunch or dinner. Order in advance and pub staff will have your food ready when you arrive. See ad, page 51.

PIONEER STORE

5244 South St./Highway 125, Protem
417-785-4115

The Pioneer Store in Protem serves up Hunt Brothers pizza, wings, burgers, deli sandwiches and more in addition to the typical convenience store

Rockbridge Rainbow Trout Ranch is the perfect location for casual fine dining.

offerings. While you're there, you can gas up your vehicle or boat, buy worms to fish with, beer, wine, propane, ice, groceries and more. See ad, page 94.

ROCKBRIDGE RAINBOW TROUT RANCH

Off N Highway northwest of Gainesville
in Rockbridge; 417-679-3619
rockbridgemo.com

This tucked-away gem that's famous throughout the region is located near the newly opened Bryant Creek State Park. Rockbridge Rainbow Trout Ranch is open daily. Fisherfolk can catch their own rainbow trout in the resort's spring-fed stream to be prepared in the Rockbridge kitchen – or opt to order off the menu, which also includes steaks, sandwiches, fresh trout and plate dinners. Grilled cinnamon rolls are a popular breakfast item. For dessert, try the homemade cobbler or order an "Edith special" (a grilled chocolate bar sandwich). Reservations recommended. See ad on page 8.

ROY'S STORE

Highway 181, Dora; 417-261-2810
A magnet for hungry locals and river-floating tour-



Bertie's homemade pies from Roy's Store in Dora.

ists, Roy's Store has it all. The epitome of a country store, guests here can purchase gas, a candy bar, heirloom seeds, craft beer from the widest selection around, feed for their livestock, a kayak, an authentic coon skin cap, handmade knife or enjoy the full service restaurant. Roy's serves breakfast, lunch and supper offering a wide variety of custom-made home-cooked meals, sandwiches, burgers and baskets. Catfish is a favorite – and oh, Bertie's homemade pies! They're know for miles around. A jam night is held each Tuesday from 6 to 8 p.m. You won't want to miss a stop here. See ad on page 17.

Continued to page 95

STOP BY WHILE TAKING A DRIVE TO HOP THE HISTORIC PEEL FERRY

THE PIONEER STORE PROTEM



We have everything you need!

Hunt Brothers Pizza

(Get a pizza in under 15 mins).

Wings. Burgers.

Ice Cream Factory pints.

Deli sandwiches.

Gas. Diesel. Worms.

Propane. Ice. Groceries.

Beer. Wine. More.



5244 South St. Hwy 125 • Protom
417-785-4415 • Summer hours 6 a.m.-8 p.m.



PLACES TO EAT & DRINK

If nightlife is what you're after, you'll want to stop in at Take 5, a bar located on Highway 5 near the Missouri - Arkansas state line.

TAKE 5

714 Highway 5 South near the state line

417-679-0275

For some great bar food, snacks and drinks, cruise on down to Take 5, about a quarter mile north of the Arkansas state line on Highway 5. Live music, pool tournaments and other entertainment options are scheduled throughout the year. See ad, page 92.

TOWN & COUNTRY SUPERMARKET

Main Street south of the Gainesville square

417-679-4584

Made-to-order sub sandwiches are available in the deli, and the hot bar features a changing variety of fried foods plus on-site smoked ribs. Breakfast, lunch or supper choices are available for takeout. See ad on page 34.

TWIN BRIDGES BAR & GRILL

at Highways 181 & 14 north of Dora

417-255-9260;

This bar and grill at Twin Bridges Resort on the North Fork of the White River features a riverside patio deck where guests relax and enjoy breakfast, lunch or dinner featuring BBQ, burgers, daily specials and other casual fare. See ad page 16.

THE GRILL AT WHISPERING WOODS

4245 Highway 177 South,

Jordan, Arkansas; 870-499-5531

whisperingwoodsar.com

With a spectacular view overlooking Lake Norfolk, the Grill at Whispering Woods offers gourmet dinner entrees, pan-seared fish, steak, chicken, pasta, vegetarian options and even a "Burger of the Month." The restaurant is a scenic 50-minute drive from Gainesville, through Mountain Home, Arkansas, to

the restaurant's location between Norfolk Dam and the town of Jordan. Open for lunch and dinner. Reservations recommended. See ad, page 88.




Hours 8 a.m. – 2 p.m.

Specializing in homemade cinnamon rolls, sticky buns pastry, cakes and cookies

SERVING BREAKFAST & LUNCH

Eat in or take it to go



5566 US Hwy 160 • Theodosia, MO
417-273-2295
psapp73@yahoo.com
www.facebook/lovebaking

A welcoming family atmosphere where you will always feel at home



**HITCH N' POST
FUEL CENTER**

**DRIVE-THRU
OPEN FOR
YOUR
CONVENIENCE**

**Deli • Sandwiches • Basic
Groceries
Low prices on tobacco and
alcohol products**



**192 State Hwy. 5
Missouri / Arkansas line**

417-679-0555

OPEN 7 DAYS A WEEK

Monday-Friday 7 a.m.-8 p.m.

Saturday 8 a.m.-8 p.m.

Sunday 9 a.m.-6 p.m.



BEER BELLY'S

HOURS:

Wednesday-Monday

11 a.m.-10 p.m.

CLOSED ON TUESDAY

Insuring What Matters Most

• Auto • Home • Business • Farm



*Call today
and ask
Taler
for a
quote*



We Shop * You Save

WE OFFER ALIGNMENTS!

OIL CHANGES • TIRES • BRAKES • STATE INSPECTIONS

We repair all types of front end work

Monday-Friday 8 a.m.-5 p.m.

Saturday 8 a.m.-noon



166 First Street • Gainesville, MO
417-679-3312



Michelle's Shear Artistry

430 Third Street, Gainesville 417-679-3133



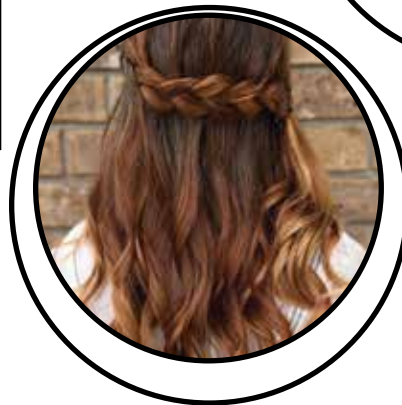
Facebook: Michelle's Shear Artistry

Instagram: michelle_shearartistry

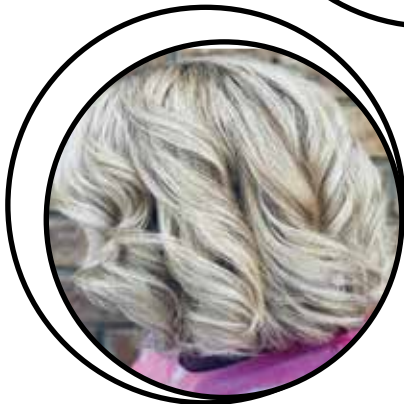


Services

- Haircuts for the entire family
- Balayage • Highlights • Color • Perms
 - Barber-style cuts
 - Flat tops • Fades
- Deep conditioning treatments
 - Smoothing treatments



Products for all
your hair care
needs! If we
don't have it,
we will order it
for you!



- MICHELLE ANDERSON, owner, 417-989-0112
- MEGAN PUEPPKE, 417-989-0643
- MICHELLE RIES, 831-809-7171

WALK-INS WELCOME IF AVAILABLE

ADVERTISER INDEX

To have your business included in future editions of The Real Ozarks magazine, contact Ozark County Times advertising manager Jenny Yarger at 417-679-4641 or jenny@ozarkcountytimes.com.

Accountants

Thomas & Douglas CPA,
page 77

Attorneys

MacPherson Law
Center, page 55
Pointer, Blackburn &
Brown, page 46
Wade Law Office,
page 86

Auction Services

Cheyney Auction,
page 31

Automotive repair and sales

101 Tire Repair, page 86
160 Pit Stop, page 97
Boyd Garrison
Enterprise, page 35
Bumper to Bumper,
page 67
Duke's Truck Repair,
page 65
Grisham's Garage,
page 42
Dustin's Body Shop,
page 67
H&W Automotive,
page 74
Southern Hills Auto
Plaza, page 75

Banking

Century Bank of the
Ozarks, page 104
Stockmens Bank,
page 33
Town & Country Bank of
Ava, page 48

Boat sales and service

Theodosia Marine,
page 24

Car wash

Theodosia car wash,
page 68

Churches

Clear Springs Church,
page 86
First Christian Church,
page 33
Frontier Baptist Church,
page 22
The Fountain Church,
page 24
Theodosia Methodist
Church, page 35

Construction

Legacy Mountain
Builders, page 61
RAJ Construction,
page 56
Ray Grisham, page 66
Suter Fencing &
Welding, page 39
Tecumseh Cabinet
Company, page 59
Winrod Brothers
Construction, page 44
Whippoorwill Hollar,
page 29

Convenience stores

Boyd Garrison
Enterprise, page 35
Hitch N Post, page 96
Little North Fork Country
Store, page 85
Pioneer Store, page 94
Roy's Store, page 17

Dental

Guy Resch, DDS,
page 42

Dumpster rental

R&R Disposal service,
page 66

Excavating

MLH & Sons Sand &
Gravel, page 46
Whippoorwill Hollar,
page 29

Farm supply

Edgeller & Harper,
page 38
Hirsch Feed & Farm
Supply, page 50
Lynch Equipment,
page 63
Suter Liquid Feed &
Fertilizer, page 39

Fireworks

Foggy Bottom Fireworks,
page 21

Flower shops

Pandora's Petals, 56

Funeral/monuments

Chaney Monument
Works, page 75
Clinkingbeard Funeral
Home, page 65

Gifts/Clothing

Molly's Salon &
Boutique, page 68
Ozarks Local, page 54
TLC Marketplace,
page 39

Golf

Lost Woods Hideaway,
page 51

Grocery stores

Cash Saver Pantry,
page 4
Town & Country
Supermarket, page 34

Hair salon

Michelle's Shear Artistry,
page 98
Molly's Salon &
Boutique, page 68
Southern Roots LLC,
page 76

Heating and A/C Repair

Whiddon's Air &
Electrical, page 46

Home Furnishings

Longdollar Furniture &
Appliance, page 74

Insurance

American Family
Insurance, page 67
Farm Bureau Insurance,
page 31
Mid Rivers Insurance
Group, page 97
Shelter Insurance,
page 9
Senior Health Matters,
page 71
Tarrant Insurance,
page 34
Wallace Insurance,
page 75

Continued to page 100

ADVERTISER INDEX

continued from page 99

Internet service

Wisper Internet, page 31

Lawn and Garden

160 Lawn & Garden, page 90

Livestock

Gainesville Livestock, page 68

Marinas

Pontiac Cove Resort, page 21

Theodosia Marina Resort, page 4

Medical

First Call, page 66

Gainesville Health Care Center,
page 59

Hospice of the Ozarks, page 56

MO Ozarks Community Health,
page 101

Ozarks Healthcare Gainesville
Clinic, page 2

Ozarks Healthcare Pulmonology,
page 87

Theodosia Family Medical,
page 29

Metal fabrication

Ozark Metalworks,
page 68

Museum

Ozark County Historium, page 43

Newspaper

Ozark County Times,
page 52, 72

Outdoors

Missouri Dept. of Conservation,
page 61

Politicians

Rep. Travis Smith, 155th House,
page 47

Sen. Karla Eslinger, 33rd District,
page 69

Real Estate

1st Choice Realty,
page 20

Century 21- Jewel Pendergrass,
page 102

Century 21 - Monty Weins,
page 77

Debra Schilling Smith, page 78

Living the Dream Realty, page 82

Missouri Ozarks Realty, page 3

Monark Realty, page 80

Mossy Oak Properties, Dan
Morrison, page 83

Ozark County Realty, page 103

Ozarks Realty 4U, page 8

Ozark Waterways Real Estate,
page 35

Sierra Ozark Corp., page 83

Vantage Real Estate, page 35

Resorts/Lodging

Antler Motel, page 29

Big Creek Resort,
page 24

Lakehouse vacation rental,
page 21

Lakewoods Resort,
page 24

Lost Cove Resort,
page 22

Moonshack, page 25

Pettit's Canoe Rental, page 12

Pontiac Anchor Down Resort,
page 22

Pontiac Cove Resort, page 21

Riverhouse, page 27

Rockbridge Rainbow Trout
Ranch, page 8

Roo-B-Doo Resort,
page 20

Sunburst Ranch,
page 12

Theodosia Marina Resort, page 4

Twin Bridges Canoe and
Campground, page 16

Whippoorwill Hollar, page 29

Restaurants/Brewery/Bars

Beer Belly's, page 96

Cookie's Restaurant, page 4

Crossroads Drips & Dips, page 90

Just Jackie's, page 21

Fyre Fries, page 90

Lake Bums Brewery, page 22

Little North Fork Country Store,
page 85

Lost Woods Hideaway, page 51

Pioneer Store, page 94

Rockbridge Rainbow Trout
Ranch, page 8

Roy's Store, page 17

Take 5, page 92

The Grill at Whispering Woods,
page 88

Twin Bridges Bar and Cafe,
page 16

Signs and banners

D&D Signs, page 75

Well Drilling

Cooper Well Drilling, page 74

Pearson Pump, page 81

To have your business included in future editions of The Real Ozarks magazine, contact Ozark County Times advertising manager Jenny Yarger at 417-679-4641 or email her at jenny@ozarkcountytimes.com.

PROUDLY SERVING YOUR HEALTHCARE NEEDS



WE MAKE SURE YOUR HEALTH IS OUR PRIORITY

Offering medical, dental, prenatal
and behavioral health care.

Fitness trainers available at Ava
MOCH Wellness Center.

**LEARN
MORE**



mo-ozarks.org

Ava Clinic

504 W. Broadway Ave. | Ava,
MO

417.683.5739

Cabool Clinic

904 Zimmerman Ave. | Cabool,
MO

417.962.5422

Houston Clinic

1340 S. Sam Houston Blvd. | Houston,
MO

417.967.0772

Gainesville Clinic

87 Elm St. | Gainesville,
MO

417.679.2775

Mansfield Clinic

804 N. Highway 5 | Mansfield,
MO

417.924.8809

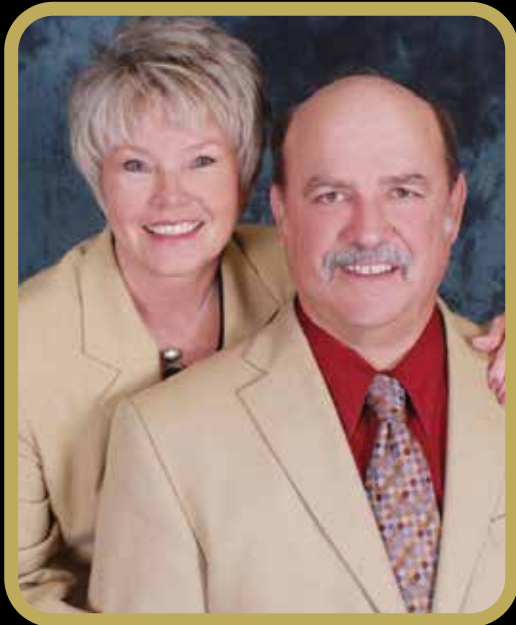
Mountain Grove Clinic

1604 N. Main St. | Mountain
Grove, MO

417.926.1713

www.Century21LeMac.com

Celebrating 22 years of ownership



Locally owned and operated by
Mickey and Jewel Pendergrass



HWY. 62-B ACROSS FROM MCDONALD'S



40 PLAZA WAY • NEXT TO WALMART

RECOGNIZED. RESPECTED. RECOMMENDED.

Don't Settle For Average, Relentless Moves



CENTURY 21 LeMac Realty
1024 Highway 62-B East
Mountain Home, AR 72653
(870) 425-6356

CENTURY 21 LeMac Realty East
40 Plaza Way, Suite 180
Mountain Home, AR 72653
(870) 492-7653

Licensed in Missouri and Arkansas
www.century21lemac.com

Rural Living in the Beauty of the Ozarks



Buying or selling...

You could go it alone, but why bother when you can count on professionals. Whatever your circumstances, whatever your needs, we can help. Give us a call today.



Frank Talbert, agent
Doreen Gimlen, broker/salesperson
Mareshah Taber, broker/owner
and Lauren Stehle, agent

Ozark County Realty, LLC

Highway 160, Theodosia
417-273-2290



MARESHAH TABER

NEW OWNER/BROKER

ozarkcountyrealty@gmail.com • www.ozarkcountyrealty.com

WE'RE ON A FIRST NAME BASIS HERE

At Century Bank of the
Ozarks, we treat our
customers like family

- Online Banking
- Remote Deposit
- Mobile & Text Banking
- E-statements

**A family-owned bank since 1894, we're now
in our second century of serving Ozark County**

CENTURY

www.cbozarks.com



BANK

of the Ozarks



24 hour ATM locations
Gainesville • Ava • Theodosia
Bakersfield • Mountain Home, Arkansas

Member
FDIC

Gainesville
417-679-3321
Bakersfield
417-284-3006
Theodosia
417-273-4245

Ava
417-683-4182
Mountain Home, Ark.
870-492-2263